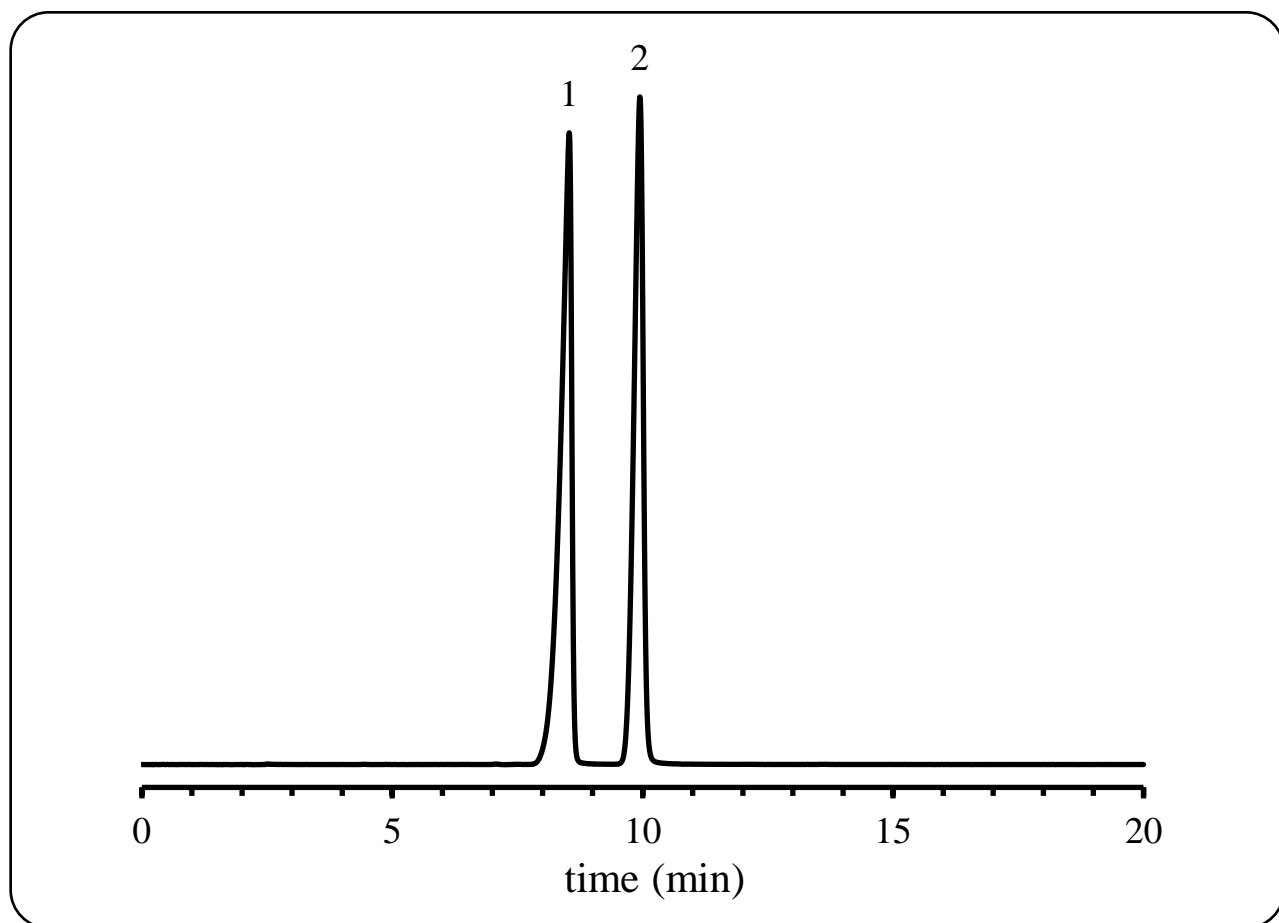


<h1>SHINWA EXPRESS</h1>	<i>Application</i>	VOL. 234
-------------------------	--------------------	----------

## Analysis of Hydroxychloroquine and Chloroquine using the STR ODS-II



Column:	STR ODS-II (5 $\mu$ m)	Detection:	UV-254 nm
Column size:	250 mmL x 4.6 mm I.D.	Sample:	1. Hydroxychloroquine sulfate (0.05 mg/mL) 2. Chloroquine phosphate (0.05 mg/mL)
Mobile phase:	CH <sub>3</sub> CN/CH <sub>3</sub> OH/H <sub>2</sub> O/H <sub>3</sub> PO <sub>4</sub> = 100/100/800/2 containing 96mg of Sodium 1-pentanesulfonate	Diluent:	mobile phase
Flow rate:	1.0 mL/min	Injection vol.:	20 $\mu$ L
Column temp.:	30°C		

### ● Features of the STR ODS- II

1. The effects of metal oxides are suppressed to a minimum due to the use of highly-purified silica gel as a base material in the STR series.
2. The columns are durable due to the use of Silica gel with high particle strength.
3. The columns are highly resistant to acidic and alkaline.
4. Excellent end capping technology provides sharp peak shapes for basic and acidic compounds, and for samples which form complexes with metals.

## ■ Analytical column specifications ■

### STR ODS-M

Product name	Particle size (μm)	Column dimensions Length x I.D. (mm)
STR ODS-M	5	150 × 4.0
		250 × 4.0
		150 × 4.6
		250 × 4.6
		150 × 6.0
		10 × 4.0
		50 × 4.0

### STR ODS- II

Product name	Particle size (μm)	Column dimensions Length x I.D. (mm)		
STR ODS-II	5	150 × 2.0		
		250 × 2.0		
		150 × 3.0		
		250 × 3.0		
		100 × 4.0		
		150 × 4.0		
		250 × 4.0		
		150 × 4.6		
		250 × 4.6		
		150 × 6.0		
		250 × 20.0		
		STR ODS-II.G	5	10 × 4.0
				10 × 4.6
10 × 6.0				
50 × 20.0				
STR ODS-II PEEK	5	150 × 4.6		
		250 × 4.6		
STR ODS-II.G PEEK	5	10 × 4.6		
STR ODS-II (Two Guard Cartridges)	5	5 × 2.0		
		10 × 3.0		
		10 × 4.6		
Holder for Guard Cartridge (with Coupler)	-	For 5 × 2.0 mm column		
	-	For 10 × 3.0 mm column		
	-	For 10 × 4.6 mm column		



※ Please do not hesitate to contact us for the other dimensions.  
Please feel free to contact us with questions related to analyses.  
Column screening services are also available.

Please be aware that specifications and prices are subject to change without prior notification.