

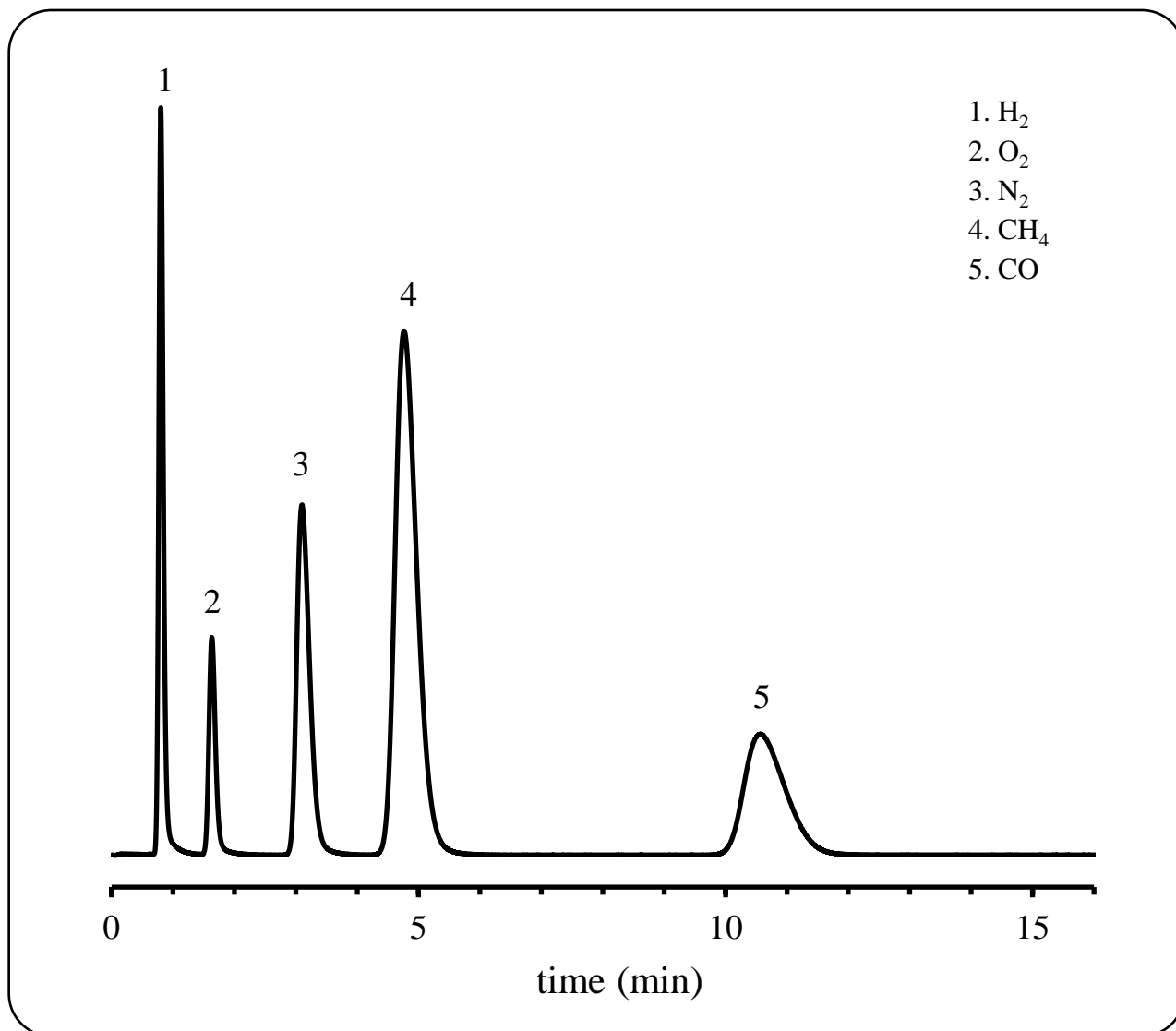
SHINWA EXPRESS

Application

VOL. 236

Analysis of Hydrogen (H₂) and Inorganic gases using Molecular Sieve 5A

Shown below is an analysis of hydrogen and inorganic gases performed using a column packed with a Molecular Sieve 5A packing material and argon as a carrier gas.



Column: Molecular Sieve 5A 60/80 mesh 2.0 m x 3.0 mm I.D. SUS

Detection: TCD 60°C

Column temp.: 60°C

Carrier gas: 30 mL/min Ar

Injection port temp.: 60°C

Sample vol.: 1.0 mL

**SHINWA CHEMICAL INDUSTRIES LTD.**

50-2 Kagekatsu-cho, Fushimi-ku
Kyoto 612-8307 Japan
TEL: +81-75-621-2360 FAX: +81-75-602-2660
E-mail: info@shinwa-cpc.co.jp
Website: <https://shinwa-cpc.co.jp/en/>