

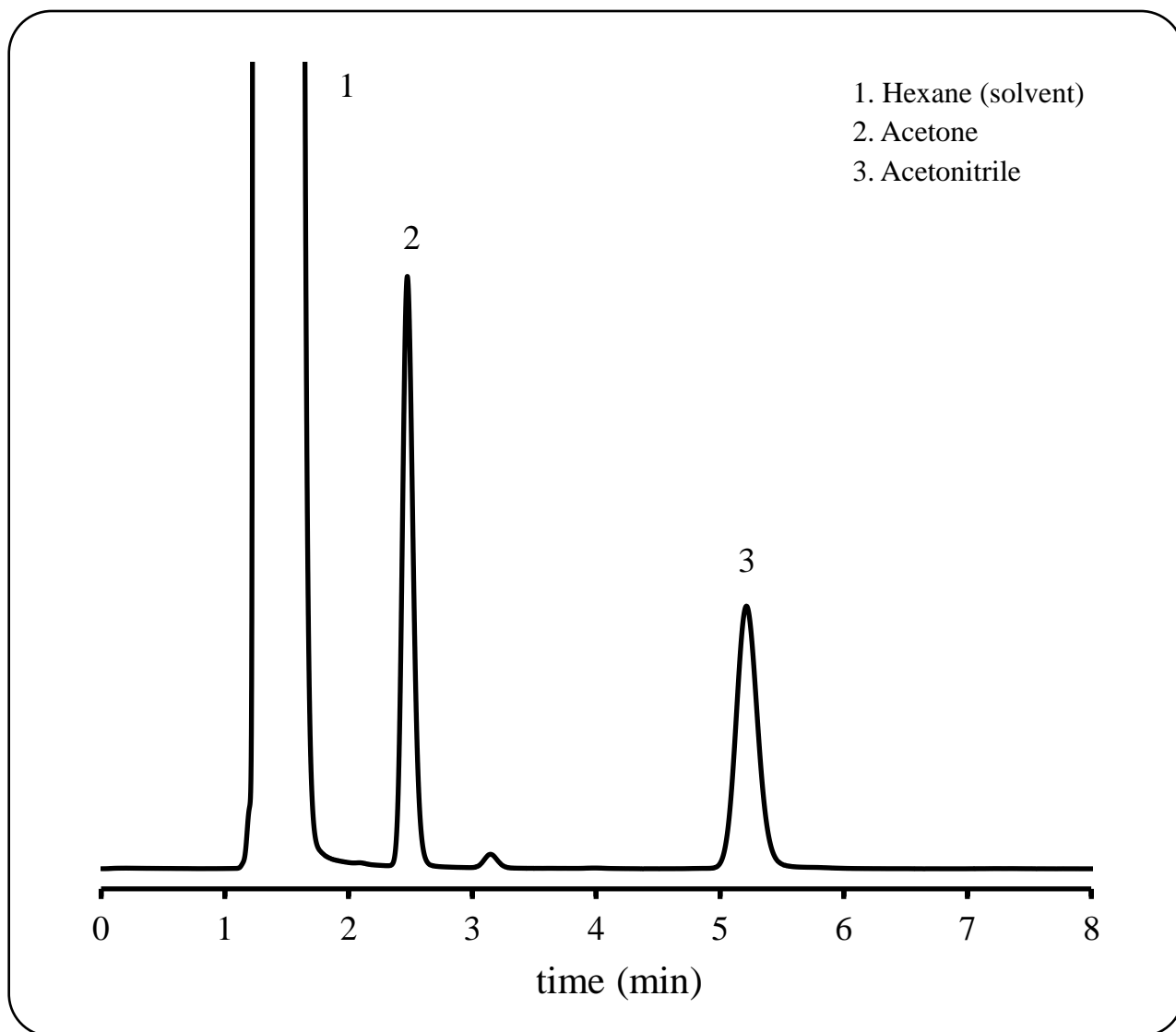
SHINWA EXPRESS

Application

VOL. 237

Analysis of Acetone and Acetonitrile using Shinwasorb

Shown below is an analysis of acetone and acetonitrile in hexane performed using a column packed with a Shinwasorb packing material.



Column: Polyethyleneglycol 20M 5% Shinwasorb-U 60/80 mesh
3.0 m x 3.0 mm I.D. Glass
Column temp.: 70°C
Injection port temp.: 200°C

Detection: FID 200°C
Carrier gas: 30 mL/min N₂
Sample vol.: 1.0 µL

**SHINWA CHEMICAL INDUSTRIES LTD.**

50-2 Kagekatsu-cho, Fushimi-ku
Kyoto 612-8307 Japan
TEL: +81-75-621-2360 FAX: +81-75-602-2660
E-mail: info@shinwa-cpc.co.jp
Website: <https://shinwa-cpc.co.jp/en/>