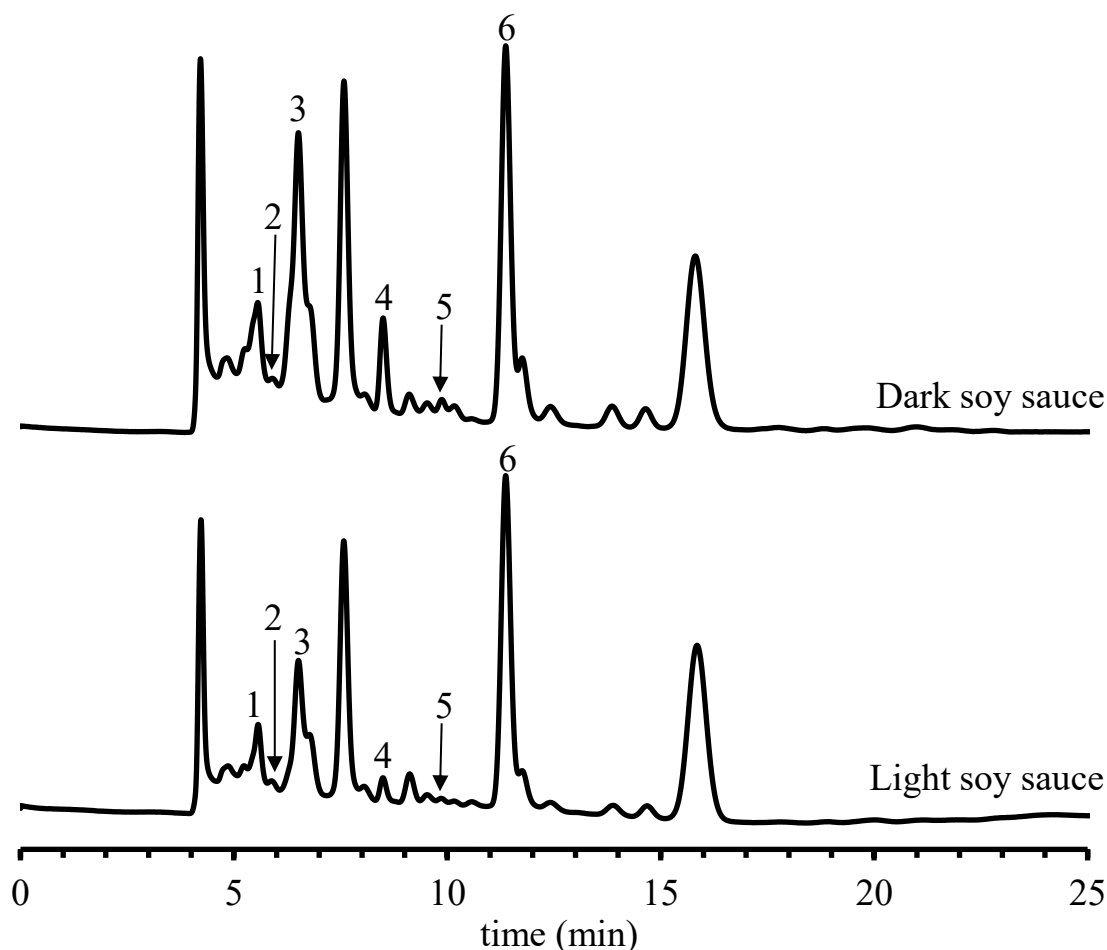


SHINWA EXPRESS

Application

VOL. 270

Analysis of Dark and Light soy sauces using the ULTRON PS-80H



Column:	ULTRON PS-80H (10 μ m)	Sample:	Dark soy sauce and Light soy sauce (dilute 10 times)
Column size:	300 mmL x 8.0 mm I.D.	1.	Citric acid
Mobile phase:	HClO ₄ aq (pH 2.1)	2.	Tartaric acid
Flow rate:	1.0 mL/min	3.	Malic acid
Column temp.:	60°C	4.	Lactic acid
Detection:	UV-210 nm	5.	Acetic acid
Diluent:	water	6.	Pyroglutamic acid
Injection vol.:	2 μ L		


SHINWA CHEMICAL INDUSTRIES LTD.

50-2 Kagekatsu-cho, Fushimi-ku
 Kyoto 612-8307 Japan
 TEL: +81-75-621-2360 FAX: +81-75-602-2660
 E-mail: info@shinwa-cpc.co.jp
 Website: <https://shinwa-cpc.co.jp/en/>

● Features of the ULTRON PS-80H

1. The ULTRON PS-80H columns are HPLC columns packed with a sulfonic acid type polystyrene cation exchange resin designed for organic acid analyses.
2. The columns utilize electrostatic repulsion interactions.
3. The columns display excellent retention reproducibility.
4. The columns are durable due to the use of a mechanically strong polymer gel.

■ Analytical column specifications ■

ULTRON PS-80H / PS-80N / PS-80C / PS-80P

Product name	Particle size (μm)	Column dimensions Length x I.D. (mm)
ULTRON PS-80H	10	300×8.0
		250×2.0
ULTRON PS-80H.G		50×8.0
ULTRON PS-80N		300×8.0
ULTRON PS-80N.L		500×8.0
ULTRON PS-80N.G		50×8.0
ULTRON PS-80C		300×8.0
ULTRON PS-80C.G		50×8.0
ULTRON PS-80P		300×8.0
ULTRON PS-80P.G		50×8.0



※ Please do not hesitate to contact us for the other dimensions.
Please feel free to contact us with questions related to analyses.
Column screening services are also available.

Please be aware that specifications and prices are subject to change without prior notification.