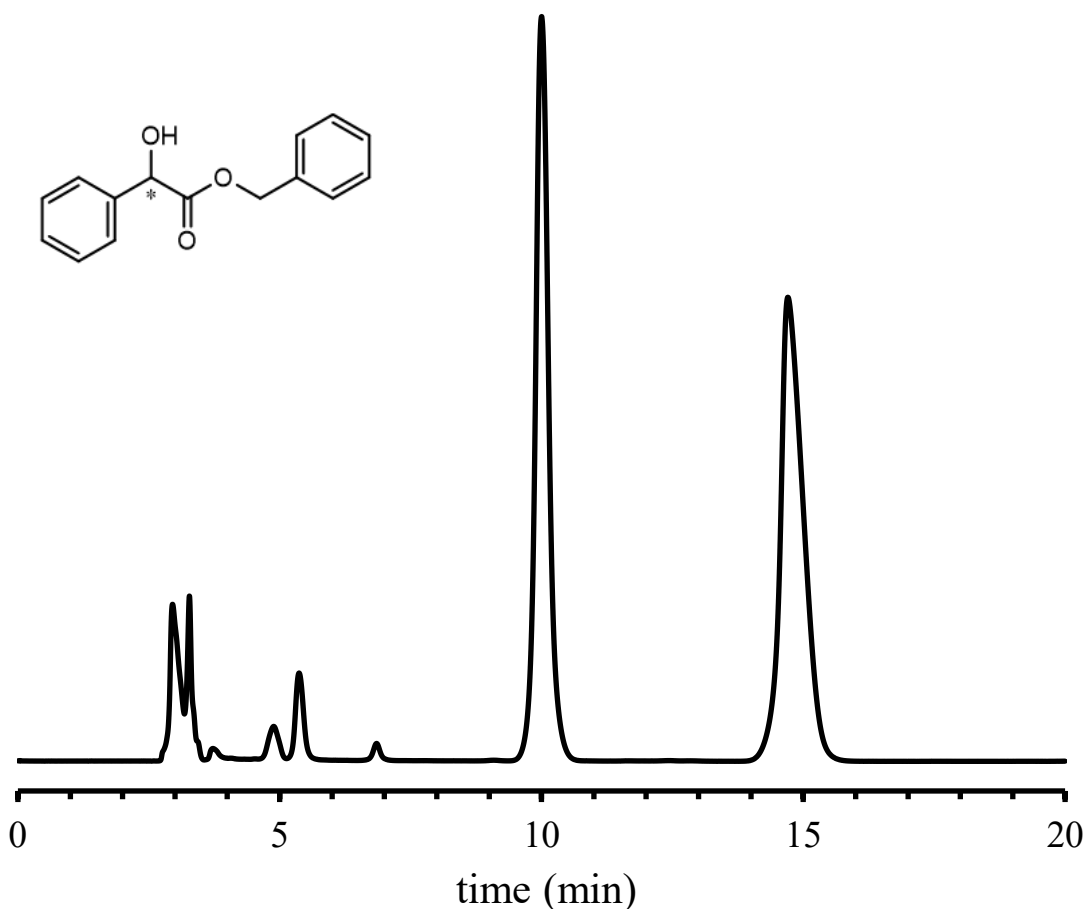


Analysis of Benzyl mandelate using the ULTRON ES-Amy-DM



Column: ULTRON ES-Amy-DM (5 μ m)
 Column size: 250 mmL x 4.6 mm I.D.
 Mobile phase: n-Hexane/EtOH/TFA = 80/20/0.1
 Flow rate: 1.0 mL/min
 Column temp.: 25°C

Detection: UV-208 nm
 Sample: Benzyl mandelate (1000 mg/L)
 Diluent: 2-propanol
 Injection vol.: 10 μ L

● Features of the ULTRON ES-Amy-DM

1. The columns are designed for the separation of various isomers.
2. The columns are suitable as a first choice for studies on the separation of chiral compounds.
3. Corresponded to L51.

■ Analytical column specifications ■

ULTRON ES-Amy-DM / ES-Cel-DM / ES-AmyCL-DM / ES-CelCL-DM

Product name	Particle size (μm)	Column dimensions Length x I.D. (mm)
ULTRON ES-Amy-DM	5	150×4.6
		250×4.6
	10	250×4.6
ULTRON ES-Cel-DM	5	150×4.6
		250×4.6
	10	250×4.6
ULTRON ES-AmyCL-DM	5	150×4.6
		250×4.6
	10	250×4.6
ULTRON ES-CelCL-DM	5	150×4.6
		250×4.6
	10	250×4.6

※ Please do not hesitate to contact us for the other dimensions.
Please feel free to contact us with questions related to analyses.
Column screening services are also available.



Please be aware that specifications and prices are subject to change without prior notification.