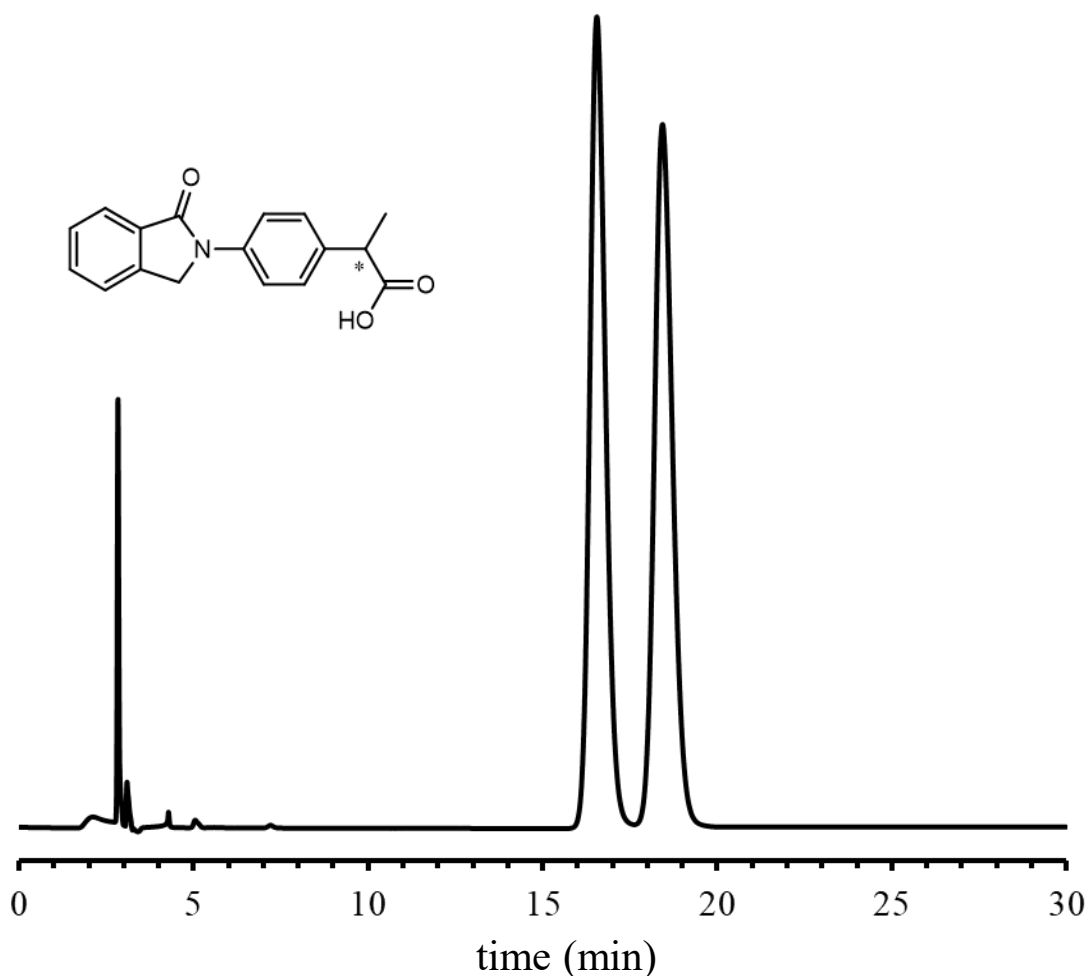


SHINWA EXPRESS *Application*

VOL. 275

Analysis of Indoprofen using the ULTRON ES-AmyCL-DM



Column: ULTRON ES-AmyCL-DM (5 μ m)
 Column size: 250 mmL x 4.6 mm I.D.
 Mobile phase: n-Hexane/CH₃Cl/EtOH/TFA = 48/50/2/0.1
 Flow rate: 1.0 mL/min
 Column temp.: 25°C

Detection: UV-286 nm
 Sample: Indoprofen (1000 mg/L)
 Diluent: tetrahydrofuran
 Injection vol.: 10 μ L

● Features of the ULTRON ES-AmyCL-DM

1. The columns are designed for the separation of various isomers.
2. Organic solvents such as tetrahydrofuran and acetone can be used as mobile phase or sample preparation solvents.
3. Corresponded to L99.

■ Analytical column specifications ■

ULTRON ES-Amy-DM / ES-Cel-DM / ES-AmyCL-DM / ES-CelCL-DM

Product name	Particle size (μm)	Column dimensions Length x I.D. (mm)
ULTRON ES-Amy-DM	5	150×4.6
		250×4.6
	10	250×4.6
ULTRON ES-Cel-DM	5	150×4.6
		250×4.6
	10	250×4.6
ULTRON ES-AmyCL-DM	5	150×4.6
		250×4.6
	10	250×4.6
ULTRON ES-CelCL-DM	5	150×4.6
		250×4.6
	10	250×4.6

※ Please do not hesitate to contact us for the other dimensions.
Please feel free to contact us with questions related to analyses.
Column screening services are also available.



Please be aware that specifications and prices are subject to change without prior notification.