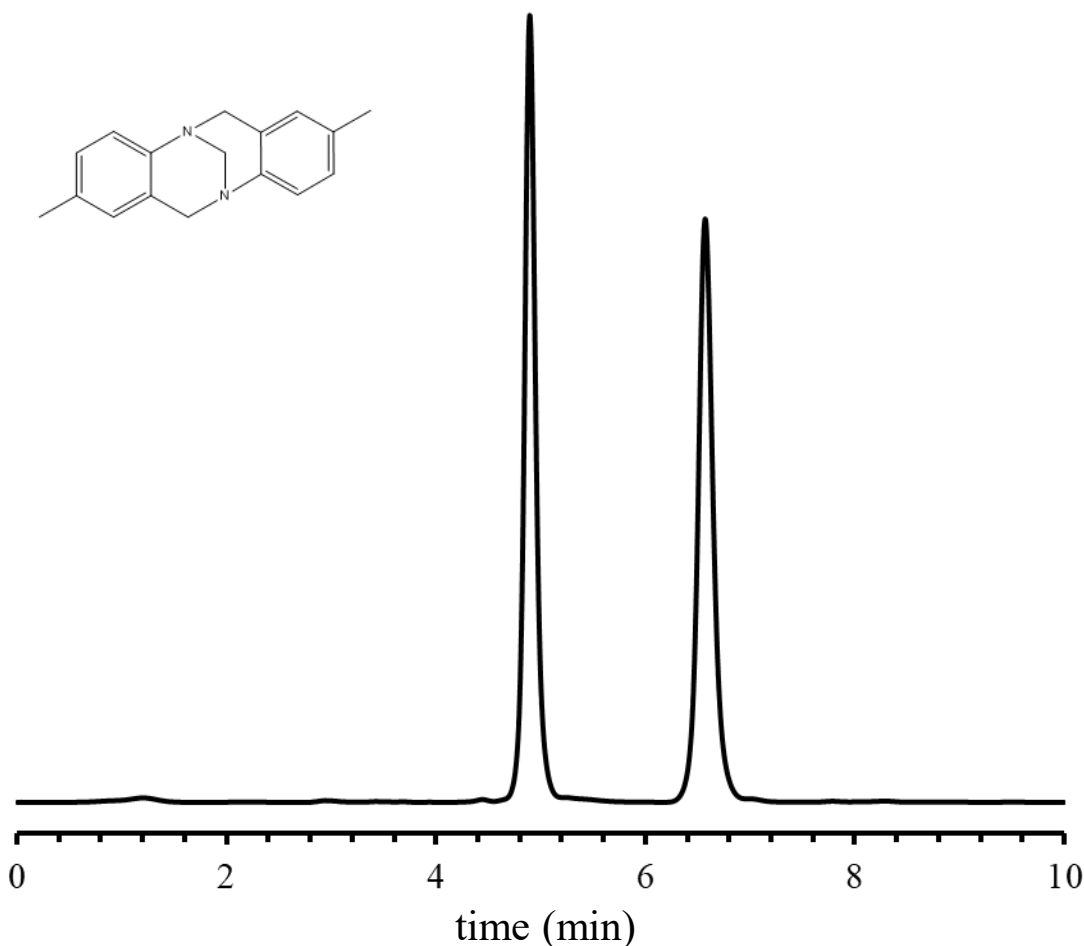


Analysis of Troger's Base using the ULTRON ES-Amy-DM



Column: ULTRON ES-Amy-DM (5 μ m)

Detection: UV-250 nm

Column size: 250 mmL x 4.6 mm I.D.

Sample: Troger's Base (1000 mg/L)

Mobile phase: n-Hexane/IPA = 90/10

Diluent: 2-propanol

Flow rate: 1.0 mL/min

Injection vol.: 10 μ L

Column temp.: 25°C

● Features of the ULTRON ES-Amy-DM

1. The columns are designed for the separation of various isomers.
2. The columns are suitable as a first choice for studies on the separation of chiral compounds.
3. Corresponded to L51.



■ Analytical column specifications ■

ULTRON ES-Amy-DM / ES-Cel-DM / ES-AmyCL-DM / ES-CelCL-DM

Product name	Particle size (μm)	Column dimensions Length x I.D. (mm)
ULTRON ES-Amy-DM	5	150×4.6
		250×4.6
	10	250×4.6
ULTRON ES-Cel-DM	5	150×4.6
		250×4.6
	10	250×4.6
ULTRON ES-AmyCL-DM	5	150×4.6
		250×4.6
	10	250×4.6
ULTRON ES-CelCL-DM	5	150×4.6
		250×4.6
	10	250×4.6

※ Please do not hesitate to contact us for the other dimensions.
Please feel free to contact us with questions related to analyses.
Column screening services are also available.



Please be aware that specifications and prices are subject to change without prior notification.