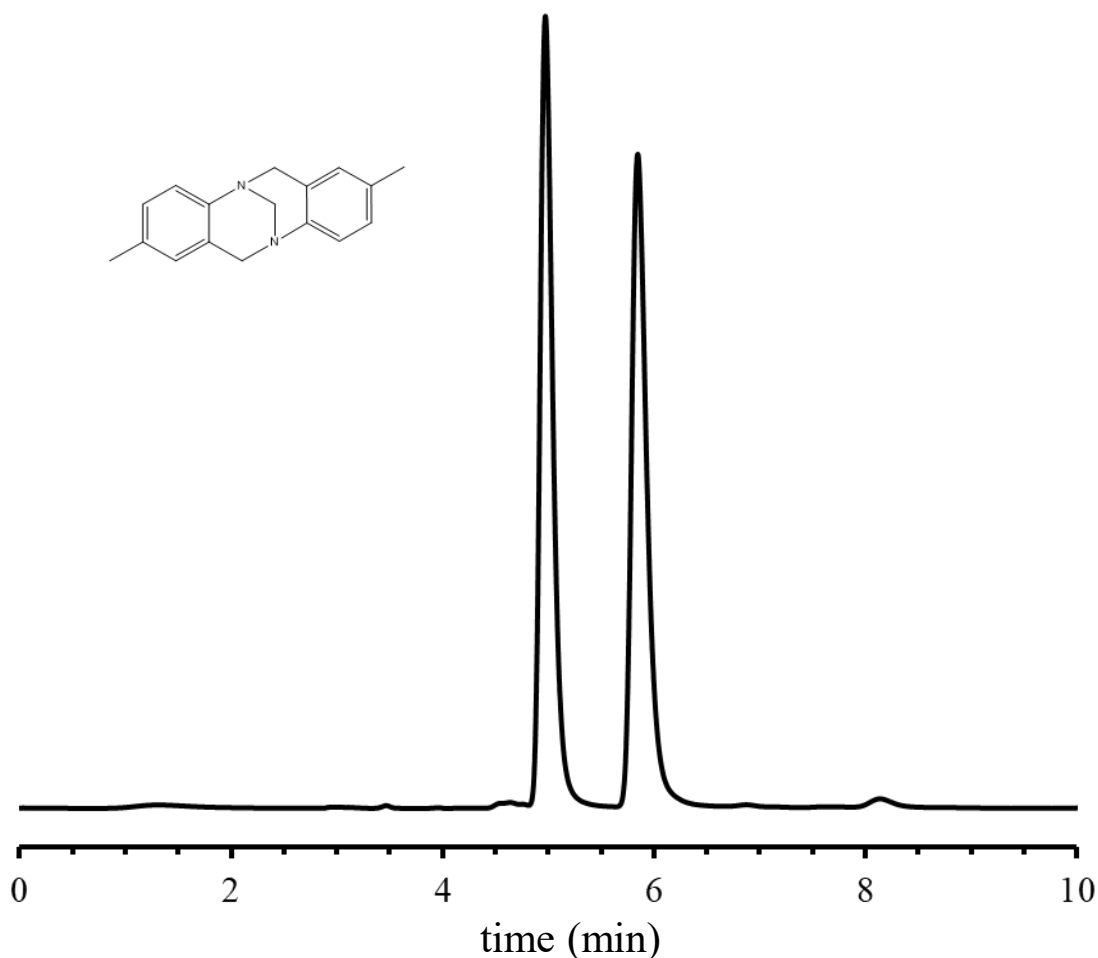
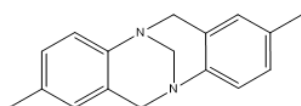


SHINWA EXPRESS

Application

VOL. 277

Analysis of Troger's Base using the ULTRON ES-AmyCL-DM



Column: ULTRON ES-AmyCL-DM (5 μ m)
Column size: 250 mmL x 4.6 mm I.D.
Mobile phase: n-Hexane/IPA = 90/10
Flow rate: 1.0 mL/min
Column temp.: 25°C

Detection: UV-250 nm
Sample: Troger's Base (1000 mg/L)
Diluent: 2-propanol
Injection vol.: 10 μ L

● Features of the ULTRON ES-AmyCL-DM

1. The columns are designed for the separation of various isomers.
2. Organic solvents such as tetrahydrofuran and acetone can be used as mobile phase or sample preparation solvents.
3. Corresponded to L99.

**SHINWA CHEMICAL INDUSTRIES LTD.**

50-2 Kagekatsu-cho, Fushimi-ku
Kyoto 612-8307 Japan
TEL: +81-75-621-2360 FAX: +81-75-602-2660
E-mail: info@shinwa-cpc.co.jp
Website: <https://shinwa-cpc.co.jp/en/>

■ Analytical column specifications ■

ULTRON ES-Amy-DM / ES-Cel-DM / ES-AmyCL-DM / ES-CelCL-DM

Product name	Particle size (μm)	Column dimensions Length x I.D. (mm)
ULTRON ES-Amy-DM	5	150×4.6
		250×4.6
	10	250×4.6
ULTRON ES-Cel-DM	5	150×4.6
		250×4.6
	10	250×4.6
ULTRON ES-AmyCL-DM	5	150×4.6
		250×4.6
	10	250×4.6
ULTRON ES-CelCL-DM	5	150×4.6
		250×4.6
	10	250×4.6

※ Please do not hesitate to contact us for the other dimensions.
Please feel free to contact us with questions related to analyses.
Column screening services are also available.



Please be aware that specifications and prices are subject to change without prior notification.