

SHINWA EXPRESS

*Application*2015
September

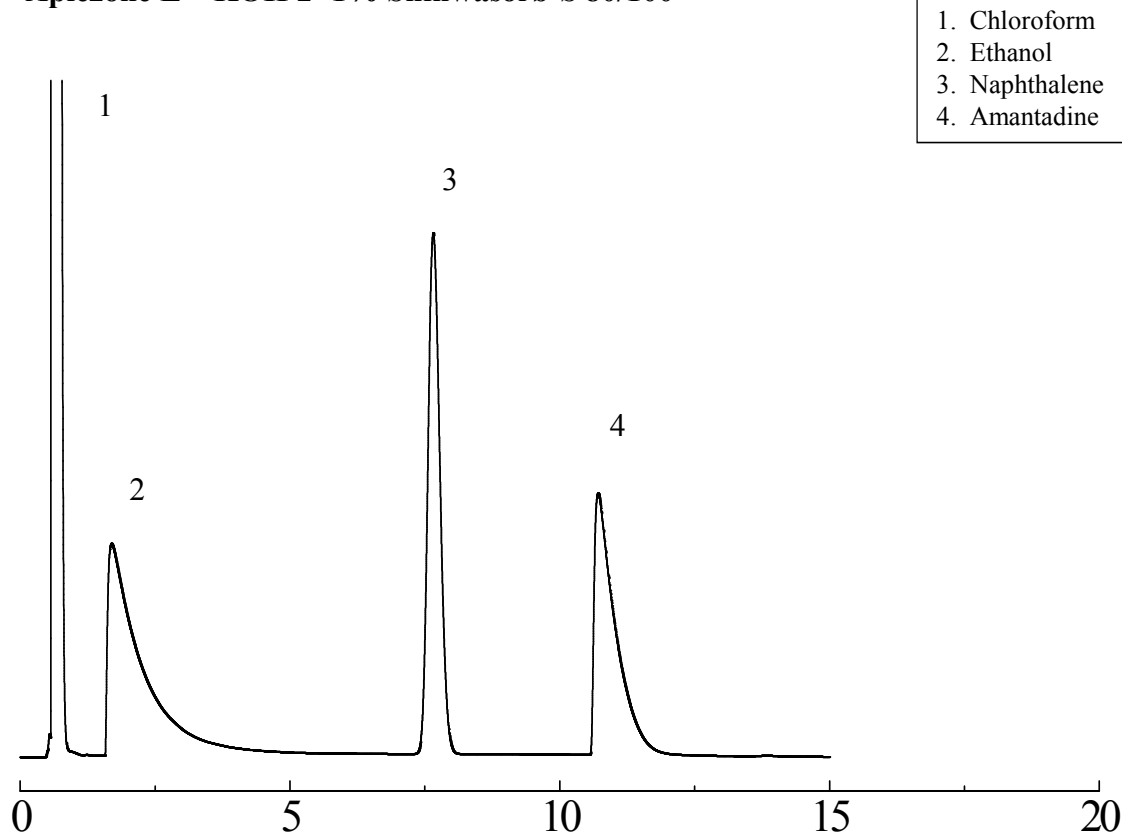
VOL. 68

Measurements of amantadine hydrochloride using Shinwasorb

Amantadine hydrochloride is a medicine to increase and enhance dopamine made in the brain. It is mainly used for antiparkinsonian drug.

Shown below is an analysis of amantadine hydrochloride performed using a column packed with a Shinwasorb packing material and in accordance with the Japanese Pharmacopoeia.

Apiezone L + KOH 2+1% Shinwasorb-S 80/100



Column:	2.1 m x 3.2 mm I.D. Glass	Sample volume:	2 μ L
Sample:	Amantadine hydrochloride	Carrier gas:	50 mL/min N ₂
Column temp.:	125°C	Injection port temp.:	200°C
Program rate:	125°C (5 min hold) → 150°C (5°C/min) → 150°C (10 min hold)		
Detector:	FID 200°C		

**SHINWA CHEMICAL INDUSTRIES LTD.**

50-2 Kagekatsu-cho, Fushimi-ku
Kyoto 612-8307 Japan
TEL: +81-75-621-2360 FAX: +81-75-602-2660
E-mail: info@shinwa-cpc.co.jp
Website: <http://shinwa-cpc.co.jp/en/>

■ Packing material specifications and price ■

Product name	Weight	Price
Apiezone L + KOH 2+1% Shinwasorb-S 80/100	25 g	23,900 JPY

■ Packed column specifications and price ■

Product name	Column material	Dimensions	Price
Apiezone L + KOH 2+1% Shinwasorb-S 80/100	Glass (For GC-2014 systems)	2.1 m x 3.2 mm I.D.	63,500 JPY

Prices for glass columns for Shimadzu systems other than the GC-2014, and systems manufactured by other manufacturers will differ from that shown above. The prices shown above are accurate as of September 24th, 2015. Please contact us for pricing.



Please feel free to contact us with questions related to analyses.

Please be aware that specifications and prices are subject to change without prior notification.