

SHINWA EXPRESS

Application

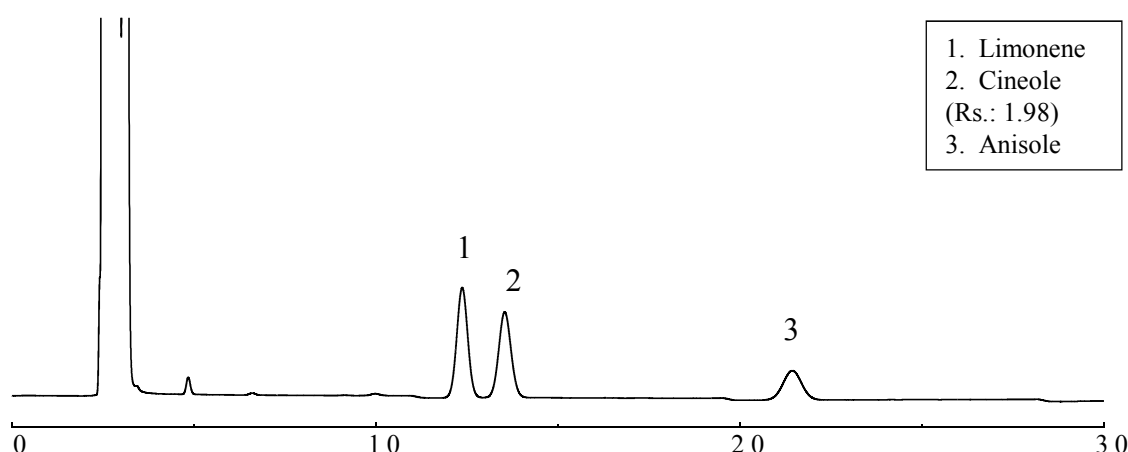
2015
October

VOL. 70

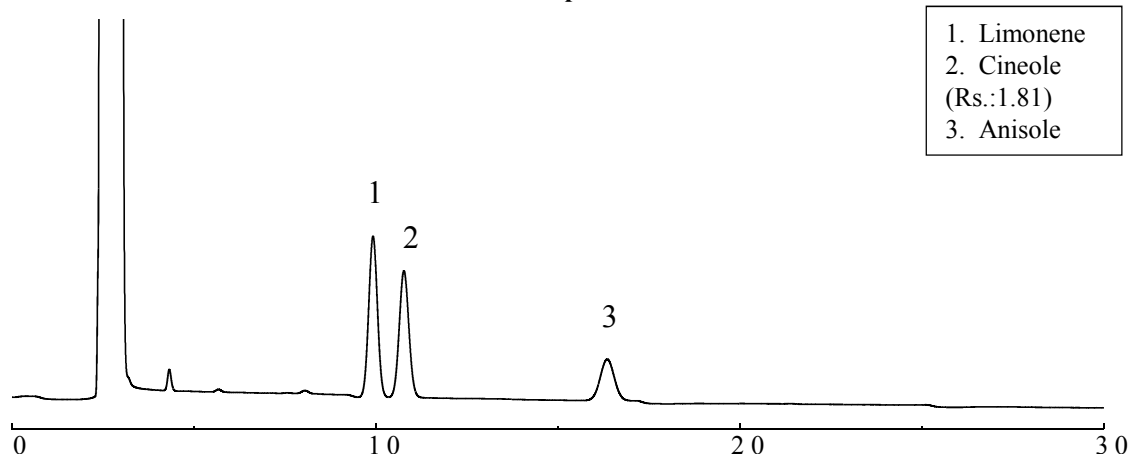
Measurements of eucalyptus oil using Shinwasorb

According to official methods in many countries, eucalyptus oil should include more than 70% of cineol which is main component of eucalyptus oil. Also eucalyptus oil is used for medical drugs by means of a behavior of sterilization, stimulating and antiseptis. Shown below is an analysis of eucalyptus oil performed using a column packed with a Shinwasorb packing material and in accordance with the Japanese Pharmacopoeia.

Thermon-3000 5% Shinwasorb-S 80/100 Column temp.: 120°C



Thermon-3000 5% Shinwasorb-S 80/100 Column temp.: 130°C



Column: 5.1 m x 3.2 mm I.D. Glass
Sample: 200 ppm in hexane
Column temp.: 120°C/130°C
Injection port temp.: 200°C

Sample volume: 2.0 µL
Carrier gas: 40 mL/min N₂
Detector: FID 200°C



SHINWA CHEMICAL INDUSTRIES LTD.

50-2 Kagekatsu-cho, Fushimi-ku
Kyoto 612-8307 Japan
TEL: +81-75-621-2360 FAX: +81-75-602-2660
E-mail: info@shinwa-cpc.co.jp
Website: <http://shinwa-cpc.co.jp/en/>

■ Packing material specifications and price ■

Product name	Weight	Price
Thermon-3000 5% Shinwasorb-S 80/100	25 g	33,200 JPY

■ Packed column specifications and price ■

Product name	Column material	Dimensions	Price
Thermon-3000 5% Shinwasorb-S 80/100	Glass (For GC-2014 systems)	5.1 m x 3.2 mm I.D.	137,100 JPY

Prices for glass columns for Shimadzu systems other than the GC-2014, and systems manufactured by other manufacturers will differ from that shown above. The prices shown above are accurate as of October 23rd, 2015. Please contact us for pricing.



Please feel free to contact us with questions related to analyses.

Please be aware that specifications and prices are subject to change without prior notification.