

SHINWA EXPRESS

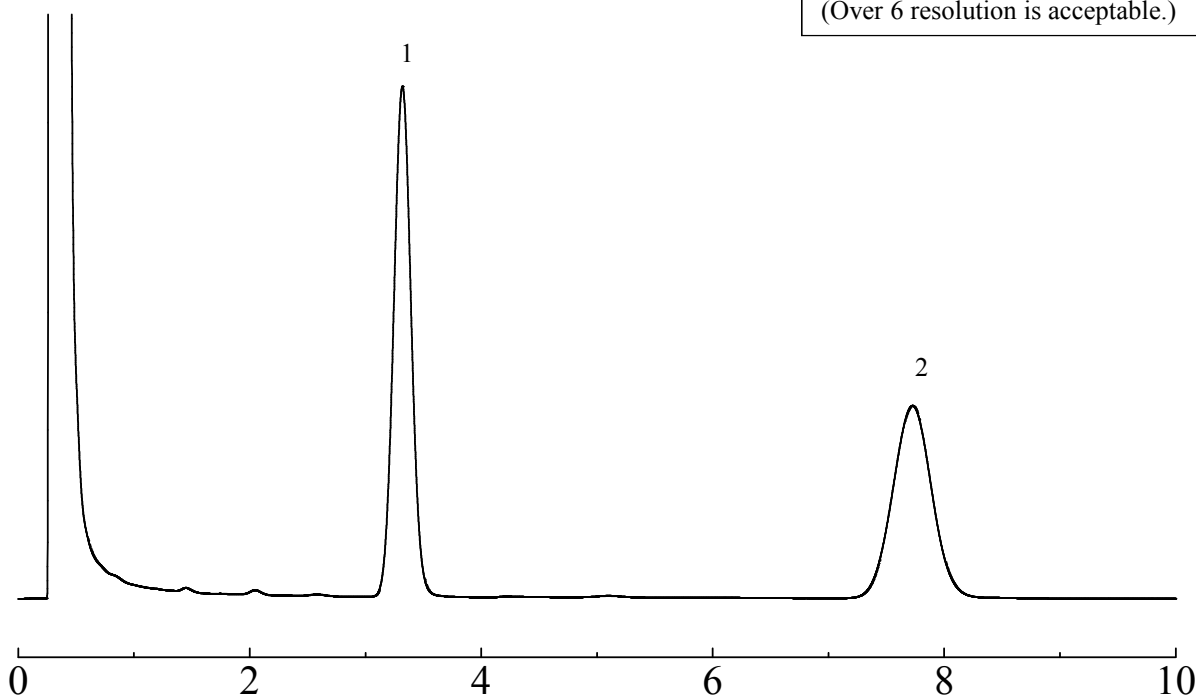
*Application*2015
December

VOL. 74

Analysis of opium alkaloid scopolamine using Shinwasorb

Opium alkaloid scopolamine is used for analgesics and anesthetic. Shown below is an analysis of opium alkaloid scopolamine performed using a column packed with a Shinwasorb packing material and in accordance with the Japanese Pharmacopoeia.

Silicone OV-17 1% Shinwasorb-S 60/80



Column: 1.6 m x 3.2 mm I.D. Glass
Sample: scopolamine hydrosulfate / homatropine hydrobromide
Column temp.: 210°C
Injection port temp.: 250°C

Sample volume: 2.0 µL
Carrier gas: 45 mL/min N₂
Detector: FID 250°C

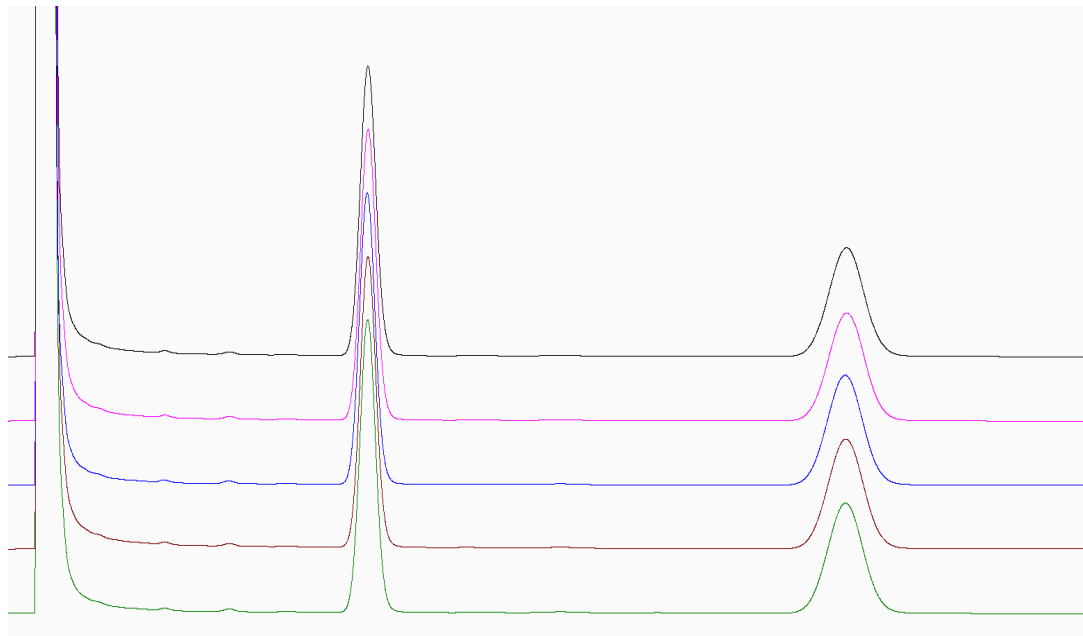
**SHINWA CHEMICAL INDUSTRIES LTD.**

50-2 Kagekatsu-cho, Fushimi-ku
Kyoto 612-8307 Japan
TEL: +81-75-621-2360 FAX: +81-75-602-2660
E-mail: info@shinwa-cpc.co.jp
Website: <http://shinwa-cpc.co.jp/en/>

■ Reproducibility experiment ■

Silicone OV-17 1% Shinwasorb-S 60/80

1. homatropine hydrobromide
 2. scopolamine
- relative standard deviation for rate of peak area: 0.21%
(Less than 2.0% of relative standard deviation for rate of peak area is acceptable.)



Column:	1.6 m x 3.2 mm I.D. Glass	Sample volume:	2.0 μ L
Sample:	scopolamine hydrosulfate / homatropine hydrobromide	Carrier gas:	45 mL/min N ₂
Column temp.:	210°C	Detector:	FID 250°C
Injection port temp.:	250°C		

■ Packing material specifications and price ■

Product name	Weight	Price
Silicone OV-17 1% Shinwasorb-S 60/80	25 g	19,000 JPY

■ Packed column specifications and price ■

Product name	Column material	Dimensions	Price
Silicone OV-17 1% Shinwasorb-S 60/80	Glass (For GC-2014 systems)	1.6 m x 3.2 mm I.D.	58,500 JPY

Prices for glass columns for Shimadzu systems other than the GC-2014, and systems manufactured by other manufacturers will differ from that shown above. The prices shown above are applicable as of December 24th, 2015. Please contact us for pricing.

Please feel free to contact us with questions related to analyses.

Please be aware that specifications and prices are subject to change without prior notification.