

LC Monolithic capillary column

	<i>Information</i>	2019 J u l y
		VOL. A15

High resolution monolithic capillary column

ULTRON HF-ODS

NEW

Introducing the ULTRON HF-ODS, the latest addition to the ULTRON series.

The ULTRON HF-ODS is a monolithic silica bonded with octadecyl groups inside fused silica capillary tubing. We recommend this column for Proteome analysis (peptide mapping) with high reproducibility and high peak capacity.

Specifications of ULTRON HF-ODS

Column name	ULTRON HF-ODS (N)		ULTRON HF-ODS (C)	
Column type	C18 (non-end capping)		C18 (end capping)	
Column size (length x inner diameter)	250 mm x 0.1 mm	700 mm x 0.1 mm	250 mm x 0.1 mm	700 mm x 0.1 mm
Applications	High resolution peptide mapping and omics			
Flow rate range	Recommended range: 300~500 nL/min			
pH range	Recommended range: 2.0~8.0			
Recommended temperature range	FEP sleeve: 30~50°C (Max. temp. 50°C)			
	PEEK sleeve: 30~60°C (Max. temp. 60°C)			
Max allowable pressure	FEP sleeve: 20.0 MPa			
	PEEK sleeve: 30.0 MPa			

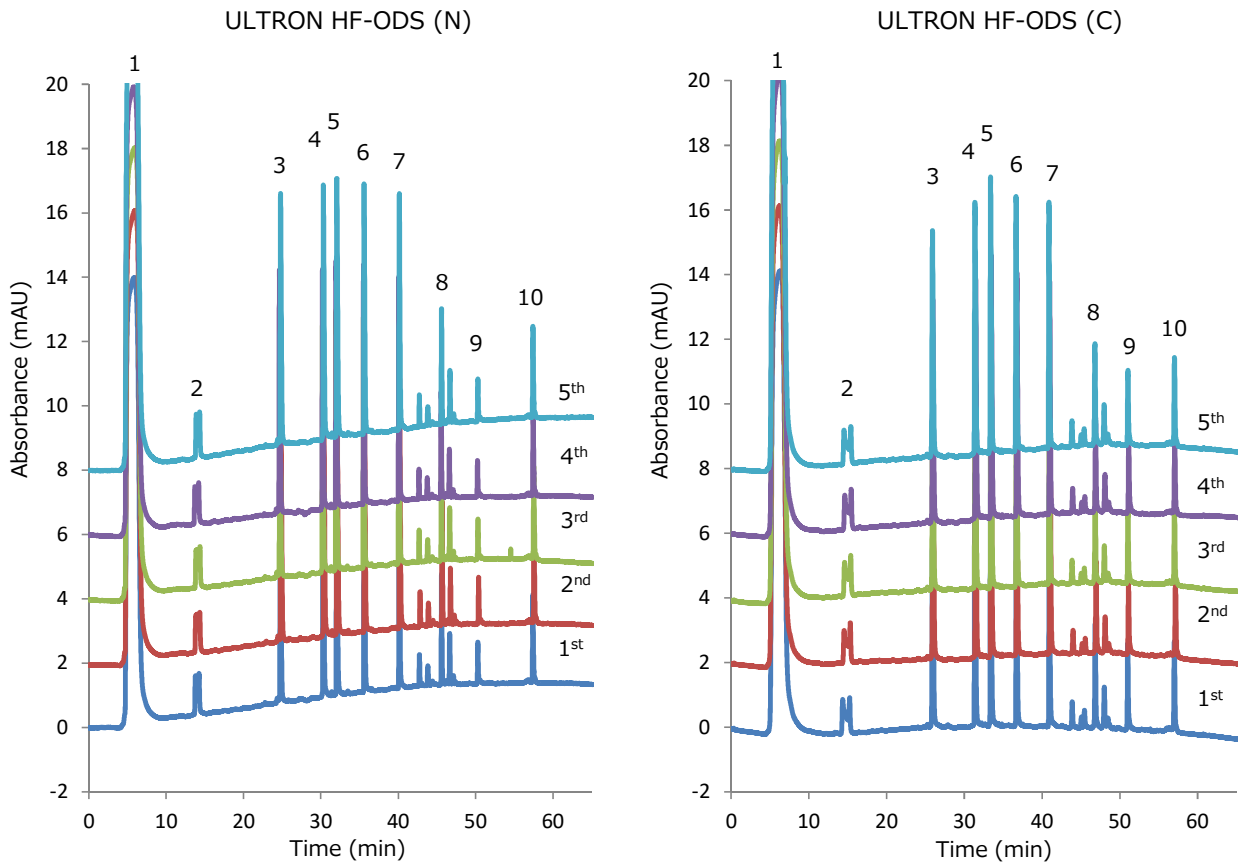
Pressure resistant specification (option)

Product name	Price	Specification
PEEK sleeve fitting (inlet side) ※	Please contact us	Max. Pressure: 30 MPa Max. Temp.: 60°C

The outer diameter of the capillary column is 0.38 mm. Please use suitable fittings (Sleeve, Ferrules, etc.) for your Nano Flow LC system. Normally, FEP sleeve fittings are shipped as a standard specification. Pressure resistant fittings (Inlet side: PEEK sleeve) are also available as option with additional cost.



Repetitive peptide separation by ULTRON HF-ODS



Sample information

Peak	Component Name	Molecular Weight	pKa	Peptide Sequence
1	Angiotensin II	1045.5345	7.35	DRVYIHPF
2	Melittin	2845.7381	12.06	GIGAVLKVLTTGLPALISWIKRKRQQ

Analytical condition

Column: ULTRON HF-ODS (N) 250 mm L x 0.1 mm I.D. (non-end capping) (INJ side: PEES sleeve)
 ULTRON HF-ODS (C) 250 mm L x 0.1 mm I.D. (end capping) (INJ side: PEES sleeve)
 Mobile phase: (A) H₂O/TFA = 100/0.1 Column temp.: 60°C
 (B) CH₃CN/TFA = 100/0.1 Detection: UV-214 nm
 Gradient: 2-52% (B) in 60 min Injection vol.: 500 nL
 Flow rate: 500 nL/min Sample: MassPREP Peptide Mixture (1.5 µg/mL) Waters

Reproducibility result (retention time)

	Angiotensin II	Melittin
Time (min)	32.02	57.47
RSD%	0.16	0.09

	Angiotensin II	Melittin
Time (min)	33.41	57.06
RSD%	0.09	0.09

Please be aware that specifications are subject to change without prior notification.