

SHINWA EXPRESS

*Information*2012
November

VOL. 1

Shinwasorb

For Gas Chromatography

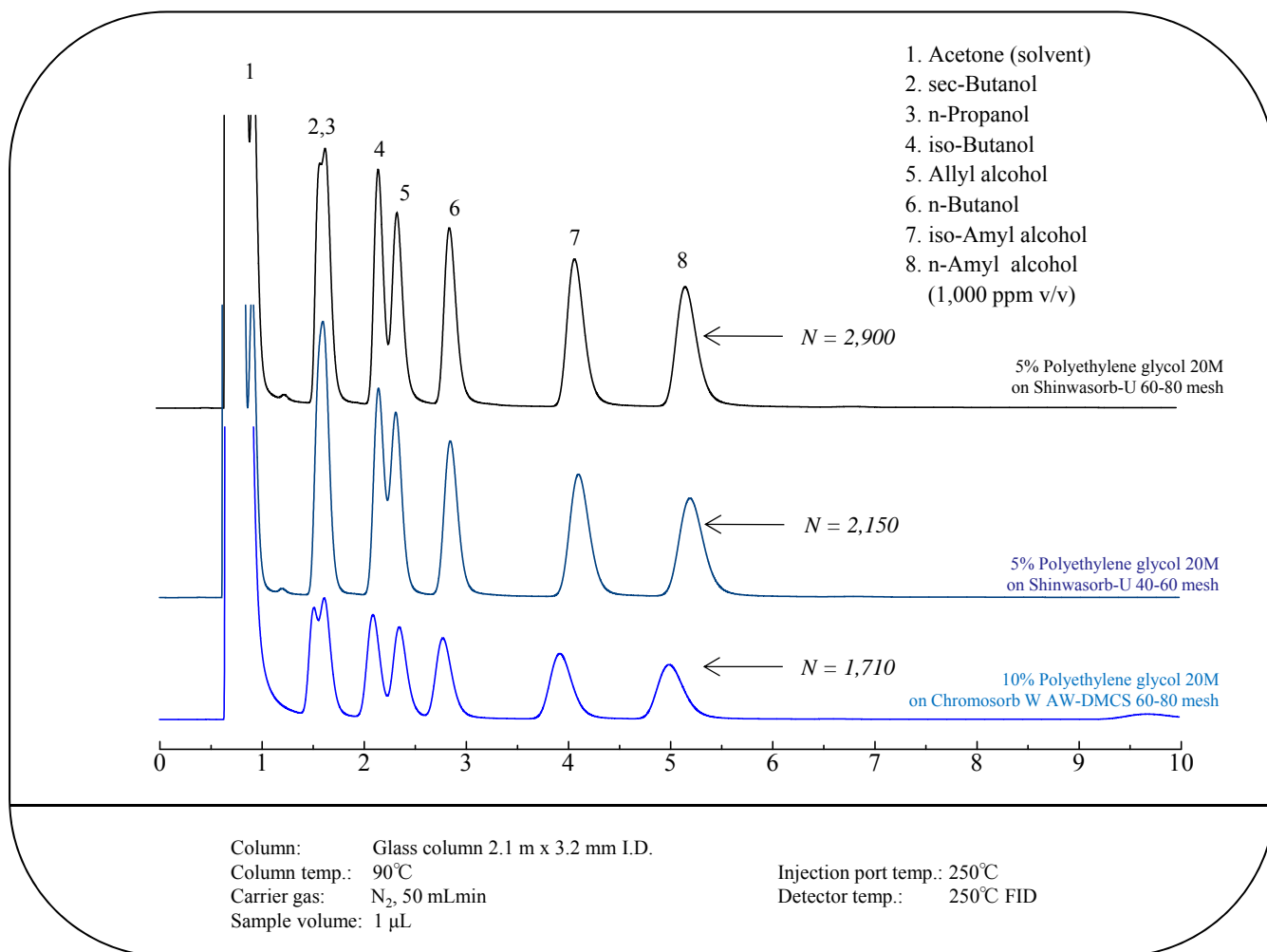
Shinwasorb is a completely new porous silica gas chromatography support which has been developed by Shinwa Chemical Industries.



Features of Shinwasorb

- Chemically synthesized support, meaning that there are no variations between lots.
- Very few mesopores, resulting in almost no adsorption of samples.
- Does not contain heavy metals, etc. which can cause sample adsorption and decomposition.
- Superior physical strength, and almost no generation of fine particles.
- Specific surface area equivalent to or greater than diatomaceous earth supports.
- Maximum stationary phase loading capacities of 25% or greater by packing material weight.
- Can be coated with a wide range of stationary phases.
- Appearance similar to white diatomaceous earth supports.

Short Chain Alcohols (Comparison of Shinwasorb and Chromosorb W)



Shinwasorb varieties

Shinwasorb is available in two varieties consisting of Shinwasorb-U (untreated) and Shinwasorb-S (silanized).



	Shinwasorb	Conventional white diatomaceous earth supports
SiO ₂ purity	> 99%	Approx. 90%
Packed density (g/mL)	0.46	0.25~0.3
Surface area (m ² /g)*	1.8	1~3
Volume of pores less than 100 nm (cm ³ /g)*	< 0.02	Approx. 0.03

*Measured using nitrogen adsorption (BET) method.

Please feel free to contact us regarding your requirements for packing materials and packed columns.