

# Packed Column for Deuterium Analysis

## Shinwa OGO-SP

### Instruction Manual

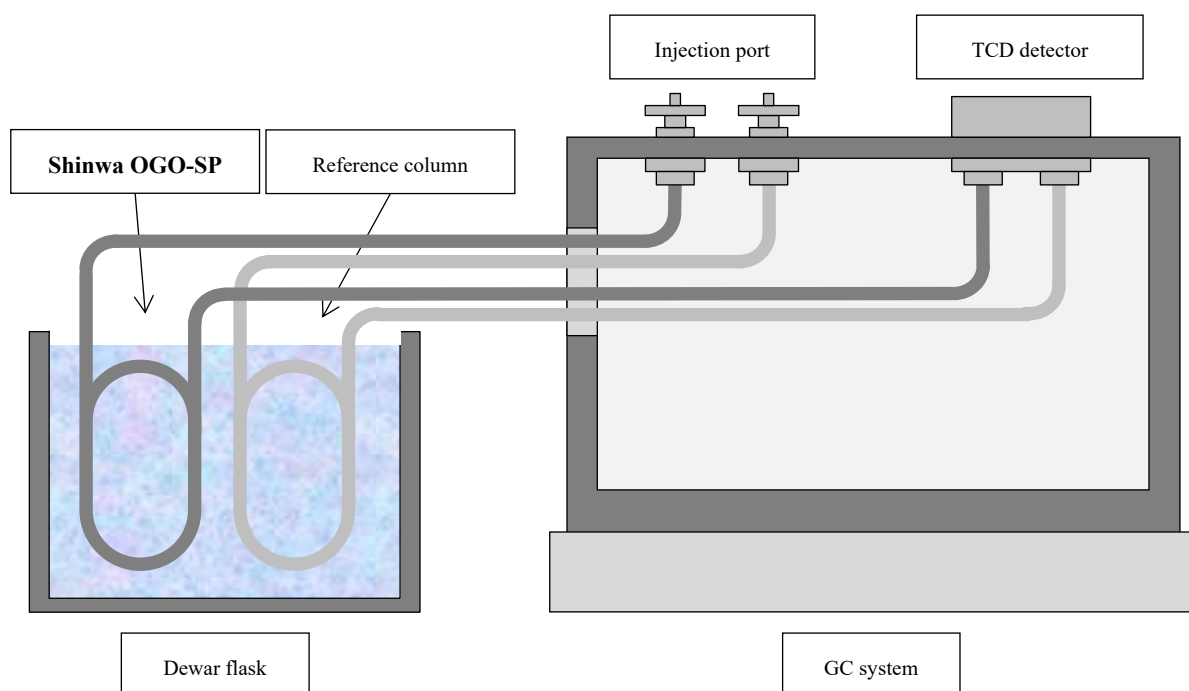
Thank you for purchasing the packed column for gas chromatography. Please do not use this product for any purposes other than as a separation column. Additionally, please read the following precautions carefully before use.

#### 1. Precautions

- ① Do not heat the column above 40°C. This may cause significant retention of components. If you are concerned about moisture adsorption, disconnect the column from the detector and flow dry nitrogen gas through the column for one full day at room temperature.
- ② Ensure that the column joint connection is secure to prevent gas leakage. Even a small pressure drop due to leakage can cause instability in the baseline. If the column is not used for an extended period, plug it tightly appropriately to prevent moisture or oxygen from entering. Store it in a place away from high temperatures or direct sunlight.

【In the case of a multi-filament system (e.g., Shimadzu GC system)】

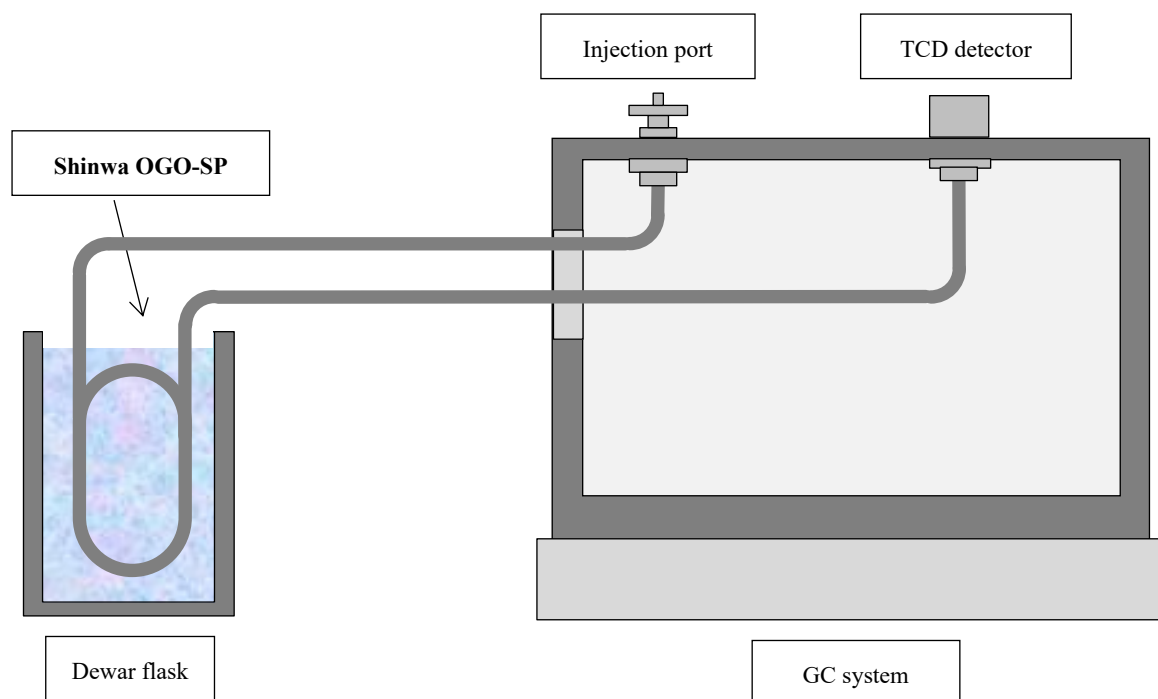
※ The below schematic diagram is for reference purpose only.



Note: In the case of a multi-filament TCD detector, in addition to the packed column for deuterium analysis, a reference column and connecting piping (e.g., GM-GF 2 x 1 mm I.D. 4 Nos) are required. For the reference column, we recommend "Shimalite Q". For a single-filament TCD detector, a reference column is not required.

【In the case of a single filament system (e.g., Agilent GC system)】

※ The below schematic diagram is for reference purpose only.



Note: In case of a single-filament TCD detector, in addition to the packed column for deuterium analysis, connecting piping (e.g., Reducing union 2 pcs, Ferrules and nuts 2 pcs each, Connecting piping 1000 mm x 0.5 mm I.D. x 2.0 mm O.D. 2 Nos) is required. If you have any questions, please contact our representative.

The packed columns are manufactured, packaged, and shipped under strict quality control. However, if there are any defects, please contact us within 14 days of receiving the product. Please note that we cannot provide a warranty for products that have deteriorated due to improper use or failure to follow the precautions regarding product life span.



50-2 Kagekatsu-cho, Fushimi-ku, Kyoto 612-8307 JAPAN

TEL 075-621-2360 URL <https://shinwa-cpc.co.jp>