

PLC

WCOT Capillary Column for Gas Chromatography

INSTRUCTION MANUAL

1. Caution

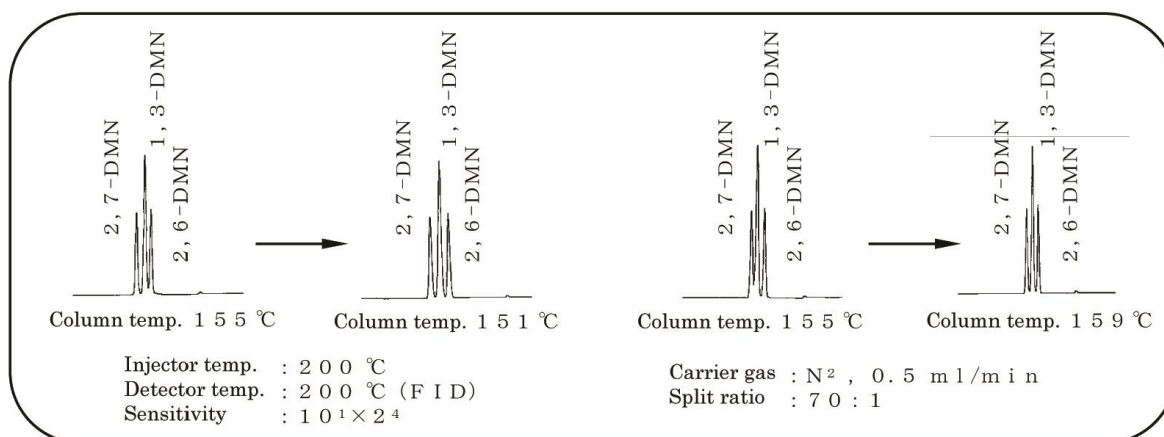
- Please read these instructions carefully before using this product.

2. Instruction

- PLC capillary columns are coated with a unique liquid crystal liquid phase. Please observe the following instructions in order to achieve the longest possible column lifetimes.

3. Notes

- Carry out analyses efficiently, and keep column usage times as short as possible. When stopping analyses temporarily for example at night, lower the column oven temperature to 50°C and continue to flow carrier gas, or turn off the analytical device you are using.
- Changes in column characteristics with usage and small differences in column oven temperatures can result in slight differences in separation characteristics. As shown in the figures below, changes in column oven temperatures result in different separation characteristics for 2,7-, 1,3-, and 2,6-DMN. In such cases, please adjust the column oven temperature.
- With regard to carrier gas, nitrogen is superior to helium in terms of separation and detection sensitivity.



■ Specification ■

Product	P / N	Limit temp	Inner diameter	Length
P L C	W P L C - P M 5 0	1 6 0 °C	0 . 2 5 mm	5 0 m



50-2 Kagekatsu-cho, Fushimi-ku, Kyoto 612-8307 JAPAN

TEL 075-621-2360 URL <https://shinwa-cpc.co.jp>