

# SHINWA EXPRESS

*Application*

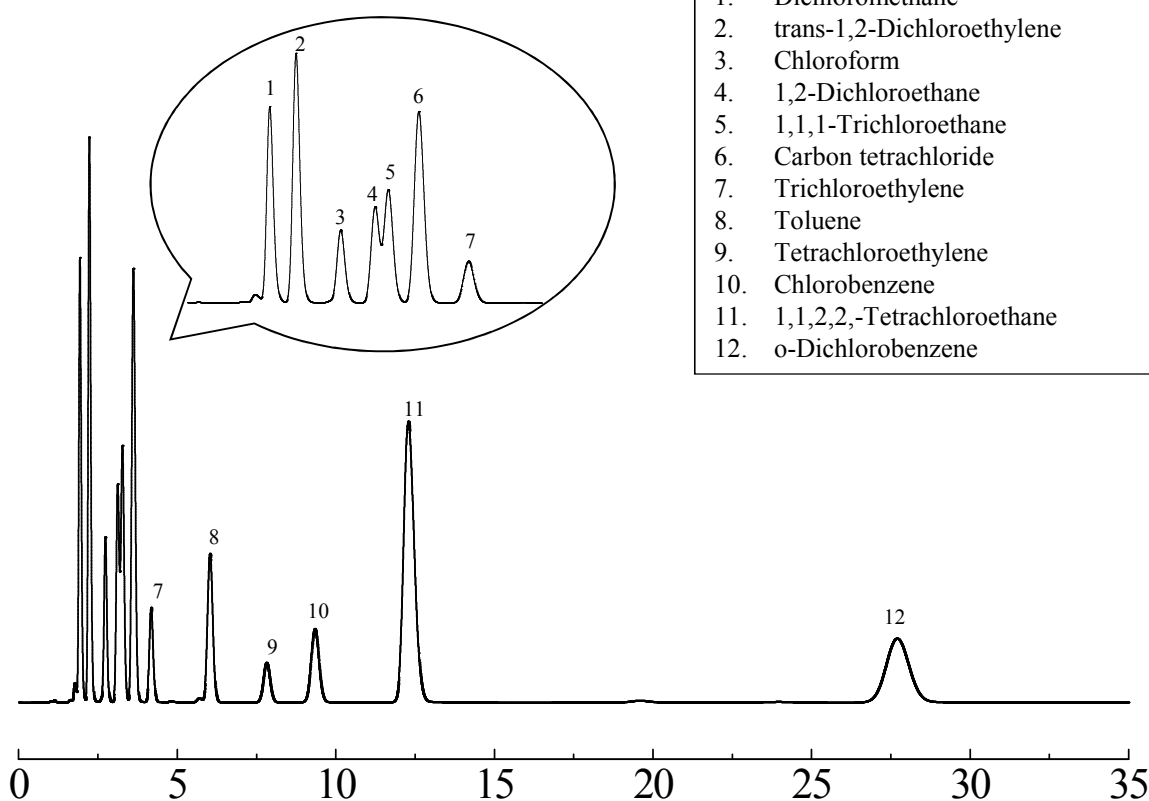
2014  
February

VOL. 23

## Measurement of chlorinated solvents in air using Shinwasorb

Chlorinated solvents are deemed to be a problem as they are not only highly harmful when released into the environment, but are also not easily degraded. Shown below is an example of an analysis of chlorinated solvents in air using a column packed with a Shinwasorb packing material.

SBS-300 10% Shinwasorb-S 60/80



Column: 3.1 m x 3.2 mm I.D. Glass  
 Sample: Chlorinated solvents in air  
 Carrier gas: 30 ml/min N<sub>2</sub>  
 Injection port temp.: 240°C

Sample volume: 1 mL  
 Column temp.: 100°C  
 Detector: FID 240°C



**SHINWA CHEMICAL INDUSTRIES LTD.**

50-2 Kagekatsu-cho, Fushimi-ku  
 Kyoto 612-8307 Japan  
 TEL: +81-75-621-2360 FAX: +81-75-602-2660  
 E-mail: [info@shinwa-cpc.co.jp](mailto:info@shinwa-cpc.co.jp)  
 Website: <http://shinwa-cpc.co.jp/en/>

■ Packing material specifications and price ■

Product name	Weight	Price
10% SBS-300 Shinwasorb-S 60/80	25 g	20,600 JPY

■ Packed column specifications and price ■

Product name	Column material	Dimensions	Price
10% SBS-300 Shinwasorb-S 60/80	Glass (For GC-2014 systems)	3.1 m x 3.2 mm I.D.	66,000 JPY (Includes test data)

Prices for glass columns for Shimadzu systems other than the GC-2014, and systems manufactured by other manufacturers will differ from that shown above. The prices shown above are accurate as of February 24th, 2014. Please contact us for pricing.



Please feel free to contact us with questions related to analyses.

Please be aware that specifications and prices are subject to change without prior notification.