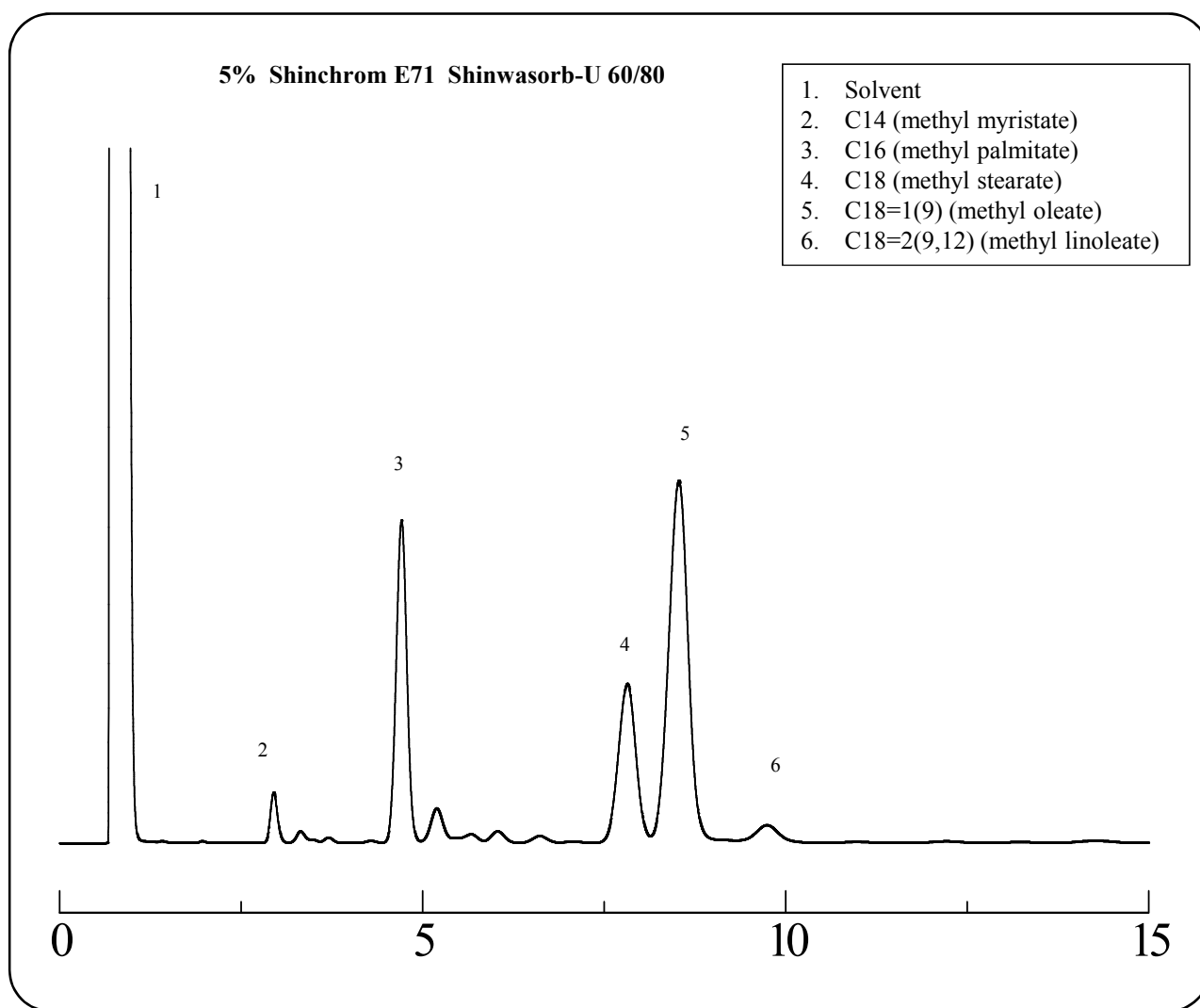


# SHINWA EXPRESS

*Application*2014  
A p r i l  
VOL. 27

## Measurement of beef fat fatty acid methyl esters (FAMES) using Shinwasorb

Analyses of fatty acid methyl esters (FAMES) are used to characterize lipid constituents in food products, and constitute an important role in food product analysis. Shown below is an example of an analysis of beef fat fatty acid methyl esters (FAMES) using a column packed with a Shinwasorb packing material.



Column: 3.1 m x 3.2 mm I.D. Glass  
Carrier gas: 40 ml/min N<sub>2</sub>  
Injection port temp.: 260°C

Sample volume: 1 µL  
Column temp.: 210°C  
Detector: FID 260°C

**SHINWA CHEMICAL INDUSTRIES LTD.**

50-2 Kagekatsu-cho, Fushimi-ku  
Kyoto 612-8307 Japan  
TEL: +81-75-621-2360 FAX: +81-75-602-2660  
E-mail: [info@shinwa-cpc.co.jp](mailto:info@shinwa-cpc.co.jp)  
Website: <http://shinwa-cpc.co.jp/en/>

■ Packing material specifications and price ■

Product name	Weight	Price
5.0% Shinchrom E71 Shinwasorb-U 60/80	25 g	18,800 JPY

■ Packed column specifications and price ■

Product name	Column material	Dimensions	Price
5.0% Shinchrom E71 Shinwasorb-U 60/80	Glass (For GC-2014 systems)	3.1 m x 3.2 mm I.D.	64,200 JPY (Includes test data)

Prices for glass columns for Shimadzu systems other than the GC-2014, and systems manufactured by other manufacturers will differ from that shown above. The prices shown above are accurate as of April 24th, 2014. Please contact us for pricing.



Please feel free to contact us with questions related to analyses.

Please be aware that specifications and prices are subject to change without prior notification.