

SHINWA EXPRESS

Application

2015
December

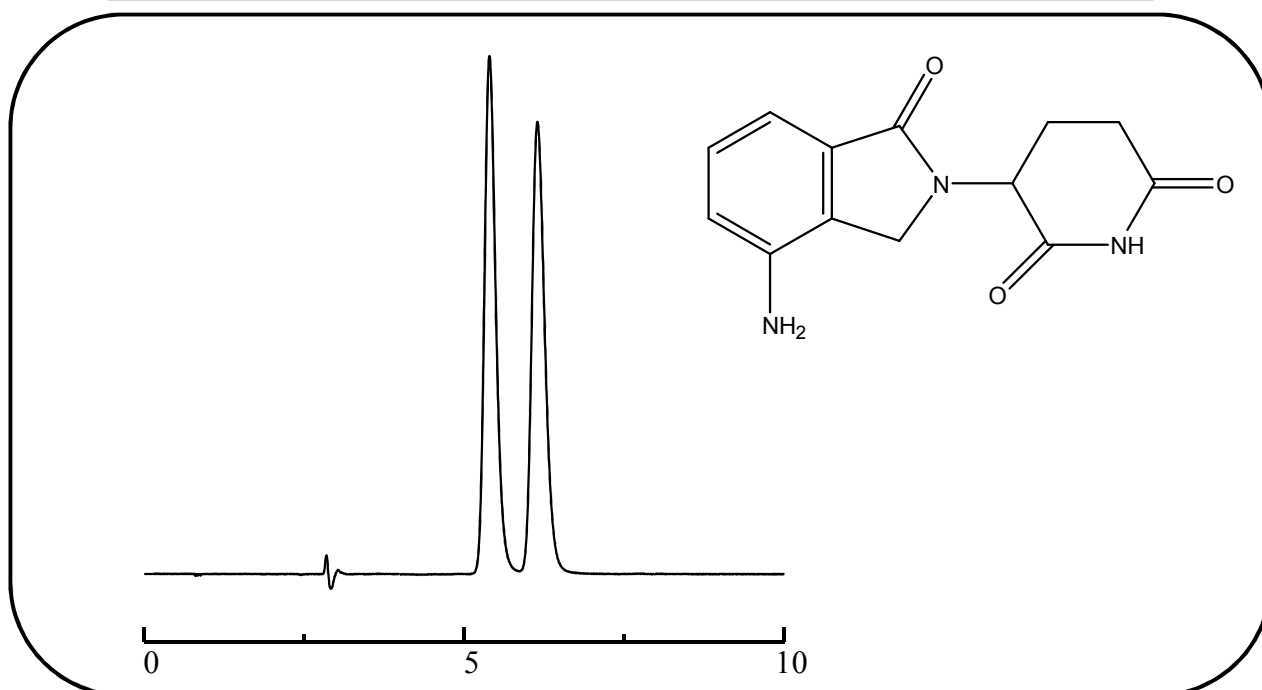
VOL. 73

Analysis of lenalidomide using the ULTRON ES-OVM

Lenalidomide is a medicine that treats blood tumor and used for the treatment for multiple myeloma. The same type of medicine, thalidomide is known that its awful side effects bring serious problems. Lenalidomide was developed to decrease the side effects and enhance an effect of anti-multiple myeloma by changing chemical structure.

Shown below is a reversed-phase analysis of lenalidomide performed using the ULTRON ES-OVM.

Lenalidomide (anti-multiple myeloma)



Column: ULTRON ES-OVM (5 μ m)
 Column size: 150 mm L x 4.6 mm I.D.
 Mobile phase: 20 mM KH_2PO_4 (pH 4.6)/ $\text{C}_2\text{H}_5\text{OH}$ = 95/5
 Flow rate: 0.7 mL/min

Column temp.: 25°C
 Detection: UV-220 nm
 Sample: 200 mg/L (in methanol)
 Injection vol.: 2 μ L

●Features of the ULTRON ES-OVM

1. Particularly effective for separations of chiral compounds.
2. Employs a highly denaturation resistant protein ligand* (ovomuroid) as a stationary phase.
3. Displays a wide range of chiral recognition.
4. No sample pretreatment required for chiral separations. (Blood plasma samples can be analyzed without pretreatment.)
5. Can be used for reversed-phase analyses.
6. Trace analyses possible (several nanograms).

*Ligand: A substance that binds selectively with a specific receptor.



SHINWA CHEMICAL INDUSTRIES LTD.

50-2 Kagekatsu-cho, Fushimi-ku
 Kyoto 612-8307 Japan
 TEL: +81-75-621-2360 FAX: +81-75-602-2660
 E-mail: info@shinwa-cpc.co.jp
 Website: <http://shinwa-cpc.co.jp/en/>

■ Analytical column specifications ■

| Product name | Particle size (μm) | Column dimensions Length × I.D. (mm) |
|----------------------------------|--------------------|--------------------------------------|
| ULTRON ES-OVM | 5 | 150 × 2.0 |
| ULTRON ES-OVM | 5 | 150 × 4.6 |
| ULTRON ES-OVM | 5 | 150 × 6.0 |
| ULTRON ES-OVM-C | 5 | 150 × 4.6 |
| ULTRON ES-OVM | 10 | 250 × 4.6 |
| ULTRON ES-OVM Prep (preparative) | 10 | 250 × 20.0 |
| ULTRON ES-OVM-3 | 3 | Contact us |

■ Guard column specifications ■

| Product name | Particle size (μm) | Column dimensions Length × I.D. (mm) |
|---|-------------------------|--------------------------------------|
| ULTRON ES-OVM.G | 5 | 10 × 4.0 |
| ULTRON ES-OVM Prep.G (preparative guard column) | 10 | 15 × 8.0 |
| ULTRON ES-OVM (guard cartridges (x2)) | 5 | 5 × 2.0 |
| Guard cartridge holder (with adaptor) | For 5 × 2.0 mm columns | |
| ULTRON ES-OVM (guard cartridges (x 2)) | 5 | 10 × 4.6 |
| Guard cartridge holder (with adaptor) | For 10 × 4.6 mm columns | |

● Protecting columns using guard columns

By using guard columns together with analytical columns, analytical columns can be protected from contamination, enabling longer column lifetimes. The use of guard columns is particularly recommended when analyzing samples containing large amounts of impurities.

Guard cartridges are also available when guard columns are changed frequently.

Please use guard columns with the same or smaller inner diameter than that of the analytical column being used.

● ULTRON ES-OVM-C

Clotidogrel bisulfate evaluation conditions based on USP standards employed for shipping inspections.
(Performance reports included with columns.)



Please feel free to contact us with questions related to analyses. Column screening services are also available.

Please be aware that specifications and prices are subject to change without prior notification.