

SHINWA EXPRESS

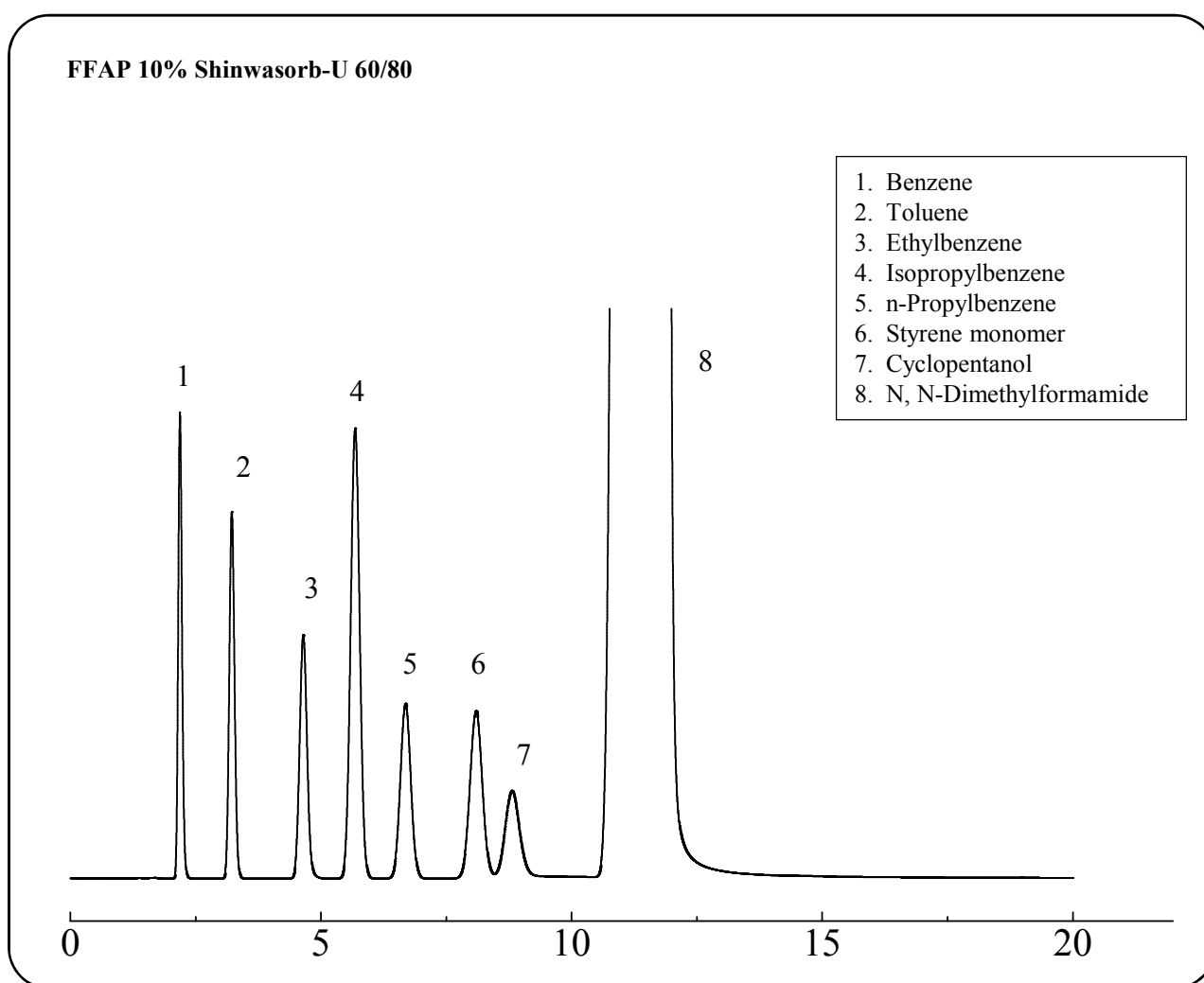
*Application*2016
January

VOL. 76

Measurement of styrene monomer in DMF using Shinwasorb

~Part 2~

Styrene monomer, which is used as a raw material in the manufacture of products such as polystyrene resin, synthetic rubber, synthetic resin paints, and FRP, possesses a strong, distinctive smell. Shown below is an example of an analysis of styrene monomer in DMF using a column packed with a Shinwasorb packing material.



Column: 3.1 m x 3.2 mm I.D. Glass
Sample: styrene monomer in DMF 1000 ppm
Column temp.: 120°C
Injection port temp.: 240°C

Sample volume: 1.0 µL
Carrier gas: 50 mL/min N₂
Detector: FID 240°C

**SHINWA CHEMICAL INDUSTRIES LTD.**

50-2 Kagekatsu-cho, Fushimi-ku
Kyoto 612-8307 Japan
TEL: +81-75-621-2360 FAX: +81-75-602-2660
E-mail: info@shinwa-cpc.co.jp
Website: <http://shinwa-cpc.co.jp/en/>

■ Packing material specifications and price ■

Product name	Weight	Price
FFAP 10% Shinwasorb-U 60/80	25 g	21,200 JPY

■ Packed column specifications and price ■

Product name	Column material	Dimensions	Price
FFAP 10% Shinwasorb-U 60/80	Glass (For GC-2014 systems)	3.1 m x 3.2 mm I.D.	66,600 JPY

Prices for glass columns for Shimadzu systems other than the GC-2014, and systems manufactured by other manufacturers will differ from that shown above. The prices shown above are accurate as of January 22nd, 2016. Please contact us for pricing.



Please feel free to contact us with questions related to analyses.

Please be aware that specifications and prices are subject to change without prior notification.