

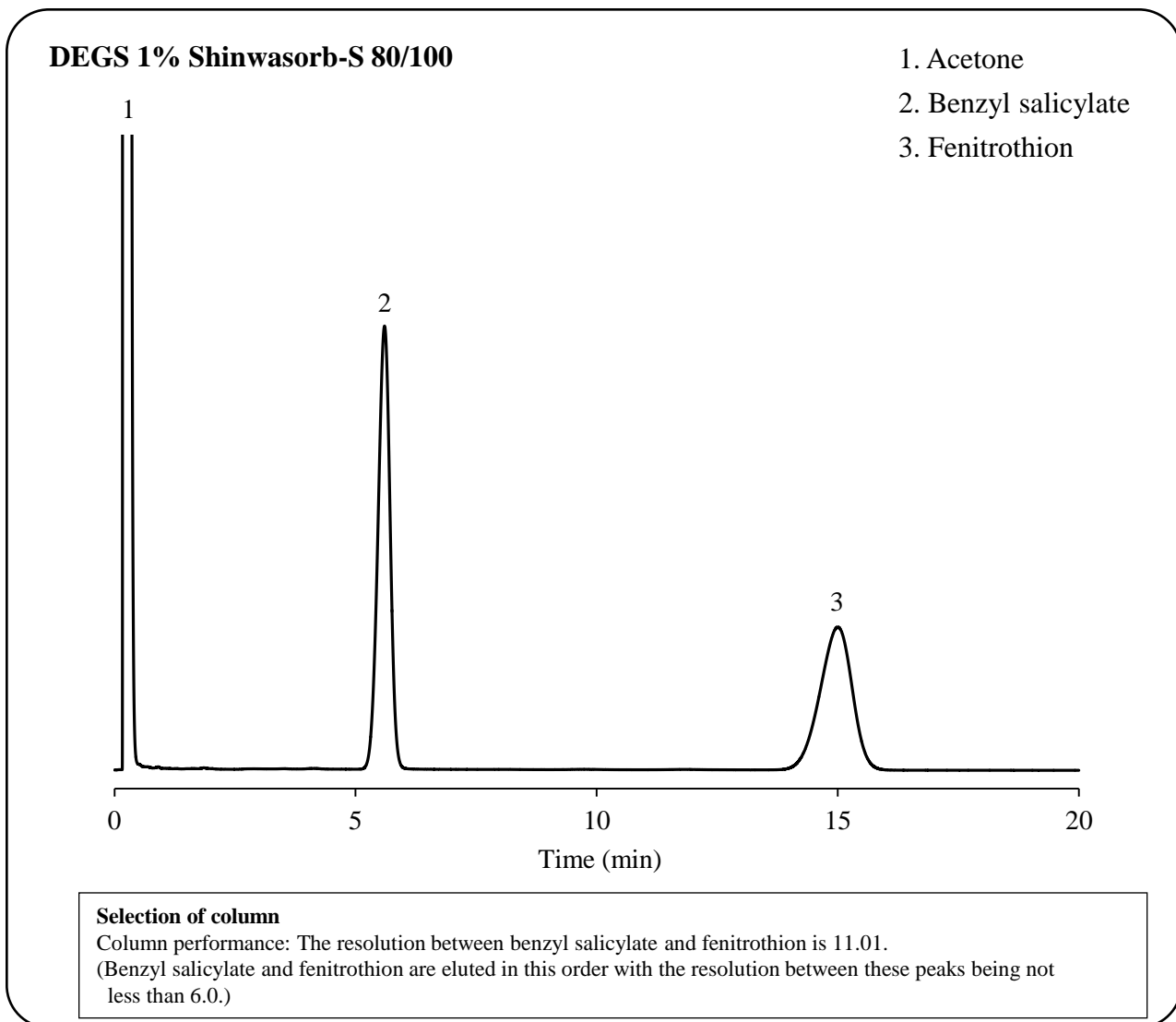
GC Packed column

<h1>SHINWA EXPRESS</h1>	<i>Application</i>	VOL. 172
-------------------------	--------------------	----------

Analysis of Fenitrothion · Phthalthrin Mixed Emulsifiable Concentrate using Shinwasorb

~Part 1~ ~ Assay 1 Fenitrothion ~

Shown below is an analysis of fenitrothion · phthalthrin mixed emulsifiable concentrate performed using a column packed with a Shinwasorb packing material in accordance with the Pesticide guidelines.



Column: 1.1 m x 3.2 mm I.D. Glass
 Sample: Benzyl salicylate, Fenitrothion in Acetone
 Column temp.: 175°C
 Carrier gas: 52 mL/min N₂ (Adjust so that the retention time of fenitrothion is about 15 minutes.)

Sample volume: 2.0 µL
 Detector: FID 200°C
 Injection port temp.: 200°C



SHINWA CHEMICAL INDUSTRIES LTD.

50-2 Kagekatsu-cho, Fushimi-ku
 Kyoto 612-8307 Japan
 TEL: +81-75-621-2360 FAX: +81-75-602-2660
 E-mail: info@shinwa-cpc.co.jp
 Website: <https://shinwa-cpc.co.jp/en/>