

# SHINWA EXPRESS *Application*

VOL. 174

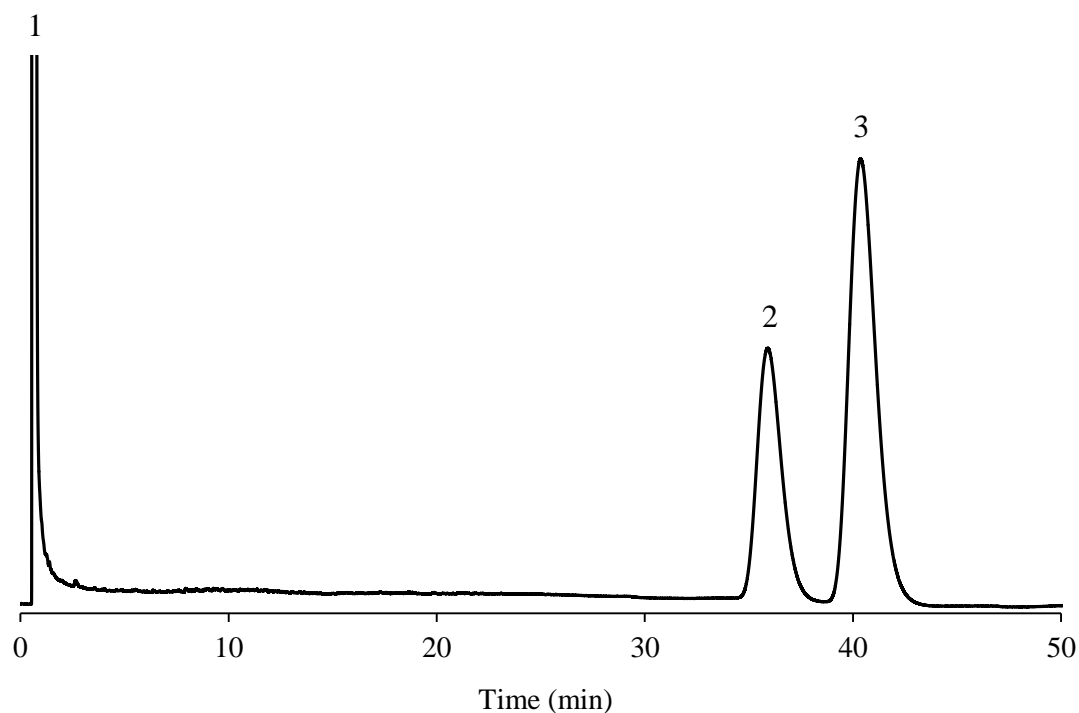
## Analysis of Phthalthrin using Shinwasorb ~Part 1~

~Isomer ratio phthalthrin~

Shown below is an analysis of phthalthrin performed using a column packed with a Shinwasorb packing material in accordance with the Pesticide guidelines.

Silicone DC QF-1 2.5% Shinwasorb-S 80/100

1. Acetone
2. Phthalthrin
3. Phthalthrin



### Selection of column

Column performance: The resolution between phthalthrin isomers is 1.95.  
(The resolution between the two peaks of phthalthrin being not less than 1.3.)

Column:	2.1 m x 3.2 mm I.D. Glass	Sample volume:	1.0 $\mu$ L
Sample:	Phthalthrin in Acetone	Detector:	FID 230°C
Column temp.:	200°C	Injection port temp.:	230°C
Carrier gas:	40 mL/min N <sub>2</sub> (Adjusted so that the retention time of the peak showing later elution of the two peaks of Phthalthrin is about 40 minutes.)		



信和化工株式会社

〒612-8307 京都市伏見区景勝町50番地2  
 TEL: 075-621-2360 FAX: 075-602-2660  
 E-mail: info@shinwa-cpc.co.jp  
 URL: <https://shinwa-cpc.co.jp/>