

SHINWA EXPRESS

Application

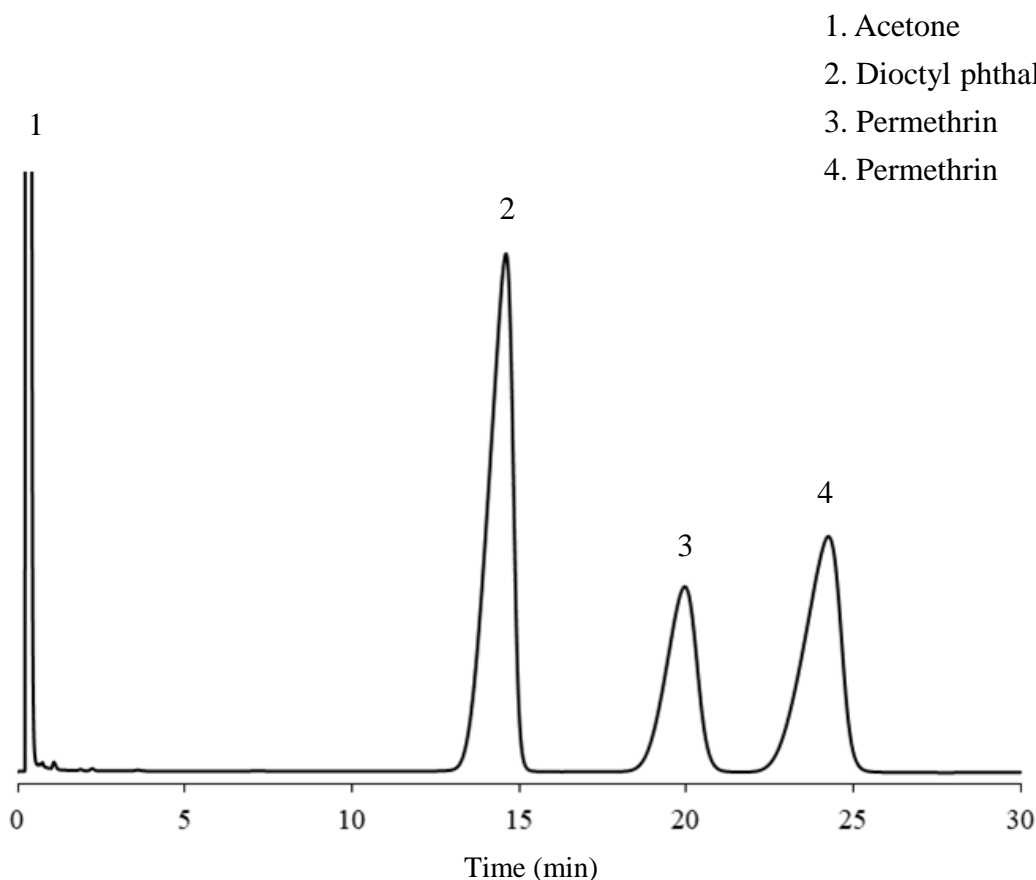
VOL. 186

Analysis of Permethrin using Shinwasorb

~ Assay ~

Shown below is an analysis of permethrin performed using a column packed with a Shinwasorb packing material in accordance with the Pesticide guidelines.

Diethylene glycol adipate (DEGA) 0.5% Shinwasorb-S 60/80



Selection of column

Column performance: The resolution between 3.permethrin and 4.permethrin is 2.26.

(The resolution between the peaks of 3.permethrin and 4.permethrin is being not less than 1.5.)

Column: 1.0 m x 3.0 mm I.D. Glass

Sample: Permethrin in acetone

Column temp.: 200°C

Carrier gas: 29 mL/min N₂ (Adjusted so that the retention time of 3.permethrin is about 20 minutes.)

Sample volume: 1.0 µL

Detector: FID 250°C

Injection port temp.: 250°C



SHINWA CHEMICAL INDUSTRIES LTD.

50-2 Kagekatsu-cho, Fushimi-ku
Kyoto 612-8307 Japan
TEL: +81-75-621-2360 FAX: +81-75-602-2660
E-mail: info@shinwa-cpc.co.jp
Website: <https://shinwa-cpc.co.jp/en/>