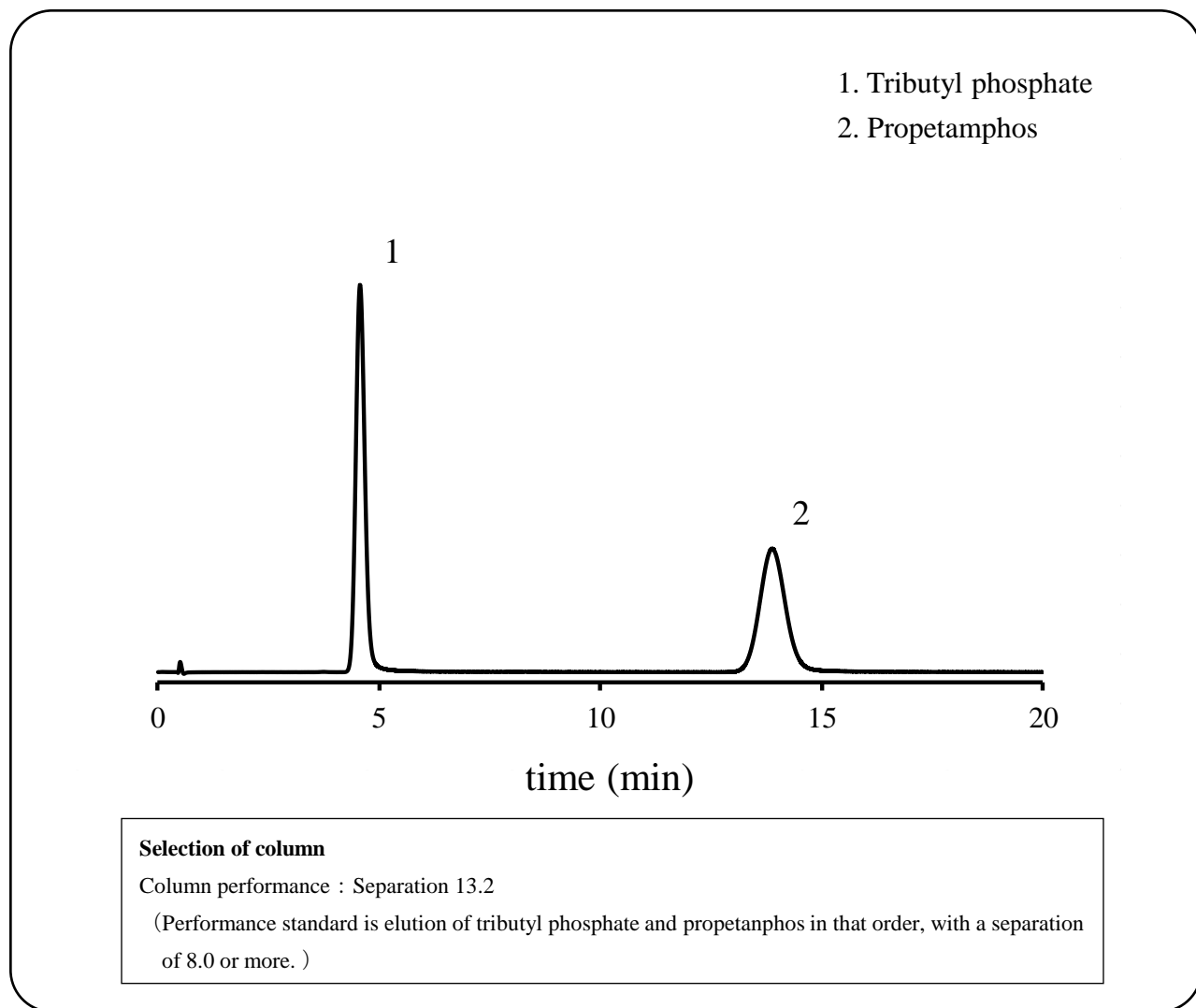


<h1>SHINWA EXPRESS</h1>	<i>Application</i>	VOL. 194
-------------------------	--------------------	----------

## Analysis of Propetamphos emulsion using Shinwasorb

~Assay~

Shown below is an analysis of propetamphos emulsion performed using a column packed with a Shinwasorb packing material in accordance with the Pesticide guidelines.



Column:	Silicone OV-225 1.5% Shinwasorb-U 60/80	Detector:	FPD 230°C
	1.5 m x 3.0 mm I.D. Glass	Carrier gas:	30 mL/min N <sub>2</sub>
Column temp.:	175°C		(Propetamphos retention time adjusted to approximately 14 minutes)
(Standard: Constant temperature around 180°C)		Sample vol.:	2.0 µL
Injection port temp.:	230°C		