

SHINWA EXPRESS

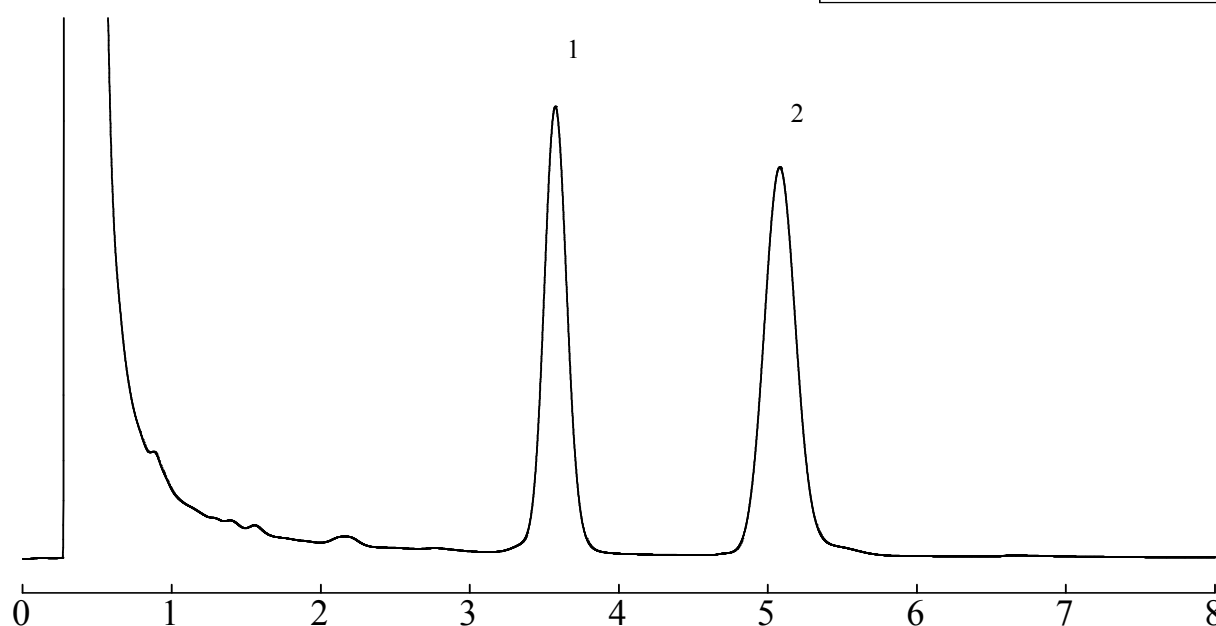
*Application*2015
November

VOL. 72

Analysis of opium alkaloid atropine using Shinwasorb

Opium alkaloid atropine is used for analgesics and anesthetic. Shown below is an analysis of opium alkaloid atropine performed using a column packed with a Shinwasorb packing material and in accordance with the Japanese Pharmacopoeia.

Silicone OV-17 1% Shinwasorb-S 60/80



Column: 1.6 m x 3.2 mm I.D. Glass
Sample: atropine hydrosulfate / homatropine hydrobromide
Column temp.: 210°C
Injection port temp.: 270°C

Sample volume: 2.0 µL
Carrier gas: 40 mL/min N₂
Detector: FID 270°C

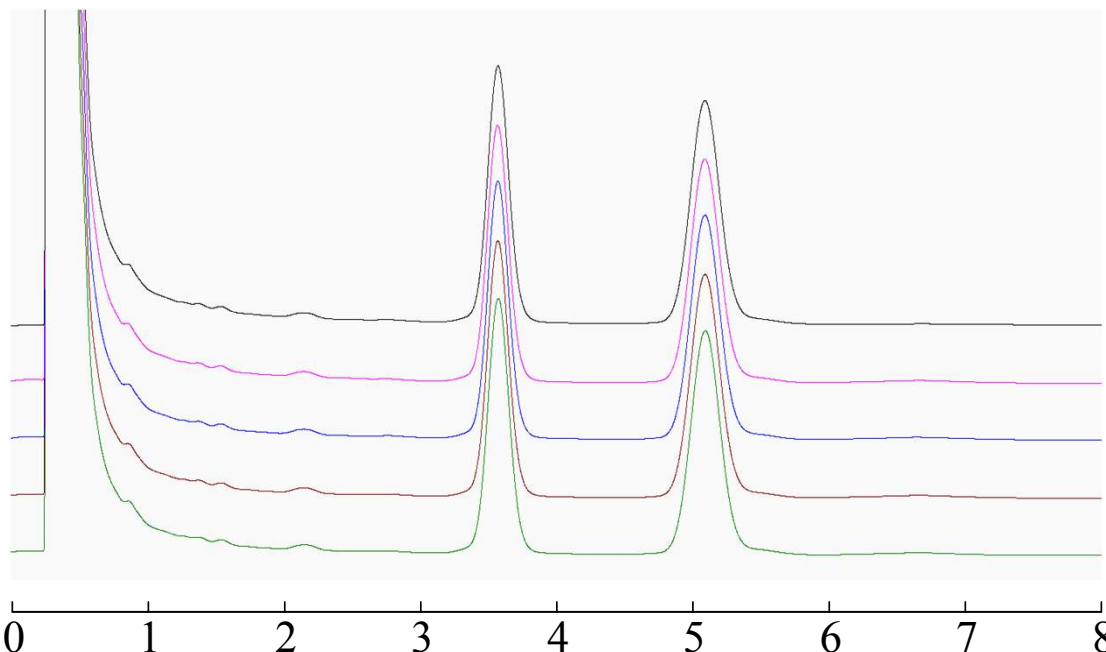
**SHINWA CHEMICAL INDUSTRIES LTD.**

50-2 Kagekatsu-cho, Fushimi-ku
Kyoto 612-8307 Japan
TEL: +81-75-621-2360 FAX: +81-75-602-2660
E-mail: info@shinwa-cpc.co.jp
Website: <http://shinwa-cpc.co.jp/en/>

■ Reproducibility experiment ■

Silicone OV-17 1% Shinwasorb-S 60/80

1. homatropine hydrobromide
 2. atropine
- relative standard deviation for rate of peak area: 0.15%
(Less than 2.0% of relative standard deviation for rate of peak area is acceptable.)



Column:	1.6 m x 3.2 mm I.D. Glass	Sample volume:	2.0 μ L
Sample:	atropine hydrosulfate / homatropine hydrobromide	Carrier gas:	40 mL/min N ₂
Column temp.:	210°C	Detector:	FID 270°C
Injection port temp.:	270°C		

■ Packing material specifications and price ■

Product name	Weight	Price
Silicone OV-17 1% Shinwasorb-S 60/80	25 g	19,000 JPY

■ Packed column specifications and price ■

Product name	Column material	Dimensions	Price
Silicone OV-17 1% Shinwasorb-S 60/80	Glass (For GC-2014 systems)	1.6 m x 3.2 mm I.D.	58,500 JPY

Prices for glass columns for Shimadzu systems other than the GC-2014, and systems manufactured by other manufacturers will differ from that shown above. The prices shown above are applicable as of November 24th, 2015. Please contact us for pricing.

Please feel free to contact us with questions related to analyses.

Please be aware that specifications and prices are subject to change without prior notification.