

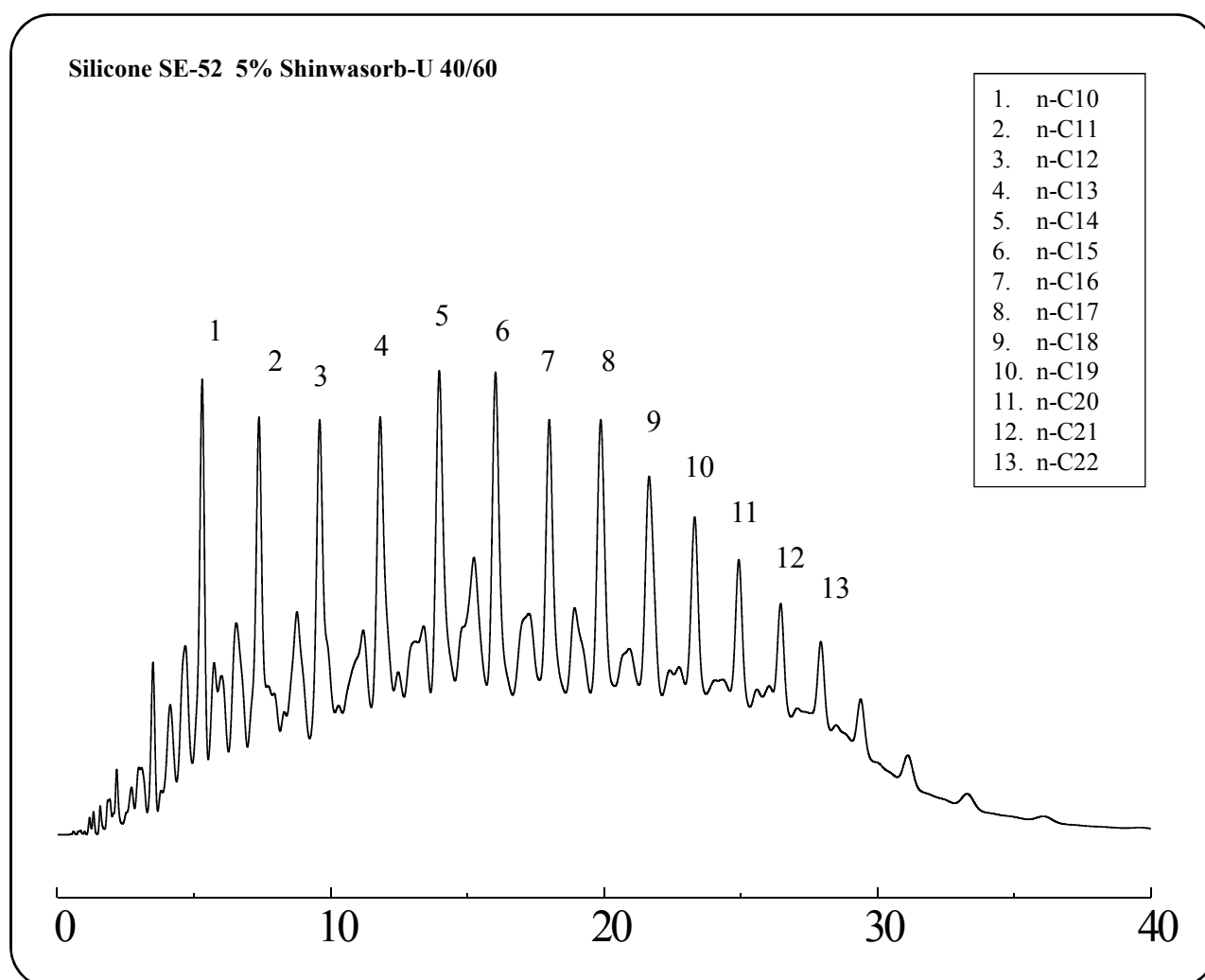
SHINWA EXPRESS

*Application*2016
February

VOL. 78

Analysis of mixture of kerosene and gas oil using Shinwasorb

Shown below is an example of mixture of kerosene and gas oil using a column packed with a Shinwasorb packing material.



Column: 2.5 m x 3.0 mm I.D. Stainless
Sample: Mixture of kerosene and light oil
Column temp.: 80-250°C (6°C/min), 250°C (12 min hold)
Injection port temp.: 270°C

Sample volume: 1.0 µL
Carrier gas: 50 mL/min N₂
Detector: FID 270°C

**SHINWA CHEMICAL INDUSTRIES LTD.**

50-2 Kagekatsu-cho, Fushimi-ku
Kyoto 612-8307 Japan
TEL: +81-75-621-2360 FAX: +81-75-602-2660
E-mail: info@shinwa-cpc.co.jp
Website: <http://shinwa-cpc.co.jp/en/>

■ Packing material specifications and price ■

Product name	Weight	Price
Silicone SE-52 5% Shinwasorb-U 40/60	25 g	12,100 JPY

■ Packed column specifications and price ■

Product name	Column material	Dimensions	Price
Silicone SE-52 5% Shinwasorb-U 40/60	Stainless	2.5 m x 3.0 mm I.D.	51,100 JPY

Prices for stainless columns other than for Shimadzu GC systems will differ from that shown above. The prices shown above are accurate as of February 24th, 2016. Please contact us for pricing.



Please feel free to contact us with questions related to analyses.

Please be aware that specifications and prices are subject to change without prior notification.