

SHINWA EXPRESS

Information

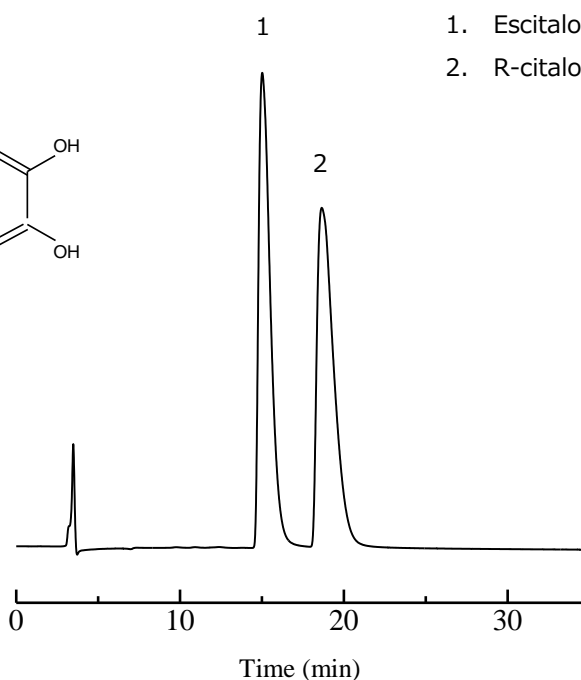
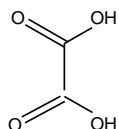
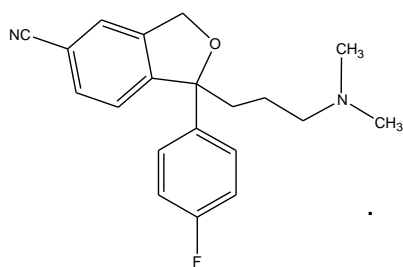
VOL. A23

ULTRON ES-OVM-E

NEW

The ULTRON ES-OVM-E: Designed to confirm separations of escitalopram oxalate as per the USP standards!

Escitalopram oxalate



Column:	ULTRON ES-OVM-E (5 μ m)	Column temp.:	30°C
Column size:	150 mm L x 4.6 mm I.D.	Detection:	UV-240 nm
Mobile phase:	50 mM KH_2PO_4 + 0.2 N NaOH (pH 7.0)/ CH_3CN = 85/15	Sample:	125 mg/L (in mobile phase)
Flow rate:	0.6 mL/min	Injection vol.:	15 μ L

What's new?

- Highly versatile reversed-phase columns
- Shipping inspections: Escitalopram oxalate (USP)
- Minimized lot-to-lot variations and stricter specifications
- Storage solvent: Low viscosity 30% aqueous acetonitrile solution


SHINWA CHEMICAL INDUSTRIES LTD.

50-2 Kagekatsu-cho, Fushimi-ku
 Kyoto 612-8307 Japan
 TEL: +81-75-621-2360 FAX: +81-75-602-2660
 E-mail: info@shinwa-cpc.co.jp
 Website: <https://shinwa-cpc.co.jp/en/>

■ Analytical column specifications ■

ULTRON ULTRON ES-OVM-3

Product name	Particle size (μm)	Column dimensions Length × I.D. (mm)
ULTRON ES-OVM-3	3	50 × 2.1
		100 × 2.1
		150 × 2.1
		200 × 2.1
		250 × 2.1
		50 × 3.0
		100 × 3.0
		150 × 3.0
		50 × 4.6
		100 × 4.6
		150 × 4.6
		200 × 4.6
		250 × 4.6
ULTRON ES-OVM-3 (Two Guard Cartridges)		5 × 2.0
Holder for Guard Cartridge (with Adaptor)	For 5 × 2.0 mm column	

ULTRON ES-OVM, ULTRON ES-OVM-C, ULTRON ES-OVM-E

Product name	Particle size (μm)	Column dimensions Length × I.D. (mm)
ULTRON ES-OVM	5	150 × 2.0
		150 × 4.6
		150 × 6.0
ULTRON ES-OVM-C (with clopidogrel bisulfate data)	5	150 × 4.6
ULTRON ES-OVM-E (with escitalopram oxalate data)		150 × 4.6
ULTRON ES-OVM.G		10 × 4.0
ULTRON ES-OVM.G with Coupler		10 × 4.0
ULTRON ES-OVM	10	250 × 4.6
ULTRON ES-OVM Prep		250 × 20.0
ULTRON ES-OVM Prep.G		15 × 8.0
ULTRON ES-OVM (Two Guard Cartridges)	5	5 × 2.0
		10 × 4.6
Holder for Guard Cartridge (with Adaptor)	For 5 × 2.0 mm column	
	For 10 × 4.6 mm column	



※ Please do not hesitate to contact us for the other dimensions.

Please feel free to contact us with questions related to analyses.
Column screening services are also available.

Please be aware that specifications and prices are subject to change without prior notification.