

SHINWA EXPRESS

Information

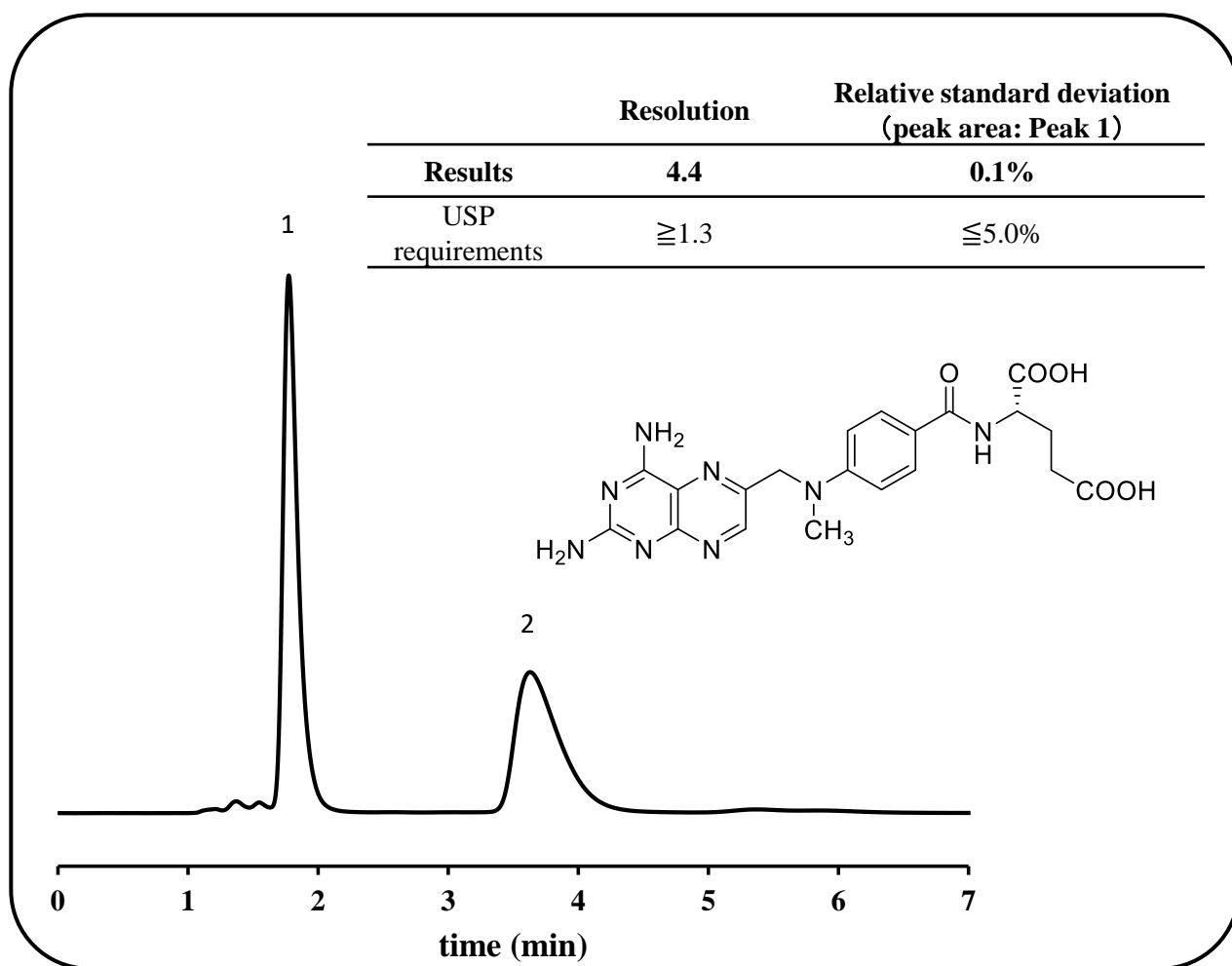
VOL. A27

ULTRON ES-BSA-2

NEW

Introducing the ULTRON ES-BSA-2, the latest addition to the ES series, which employs BSA as the stationary phase.

This column is corresponded to USP L75.



Column: ULTRON ES-BSA-2 (7 μm)
 Column size: 150 mm L x 4.0 mm I.D.
 Mobile phase: Solution C/CH₃(CH₂)₂OH = 92/8
 Solution A: 50 mM Na₂HPO₄
 Solution B: 50 mM NaH₂PO₄
 Solution C: Solution A and Solution B = 5/6
 Adjust with 2N sodium hydroxide to a pH of 6.9

Flow rate: 1.5 mL/min
 Column temp.: 25°C
 Detector: UV-302 nm
 Sample: 1. (S) - Methotrexate
 2. (R) - Methotrexate
 Diluent: mobile phase
 Injection vol.: 20 μL



SHINWA CHEMICAL INDUSTRIES LTD.

50-2 Kagekatsu-cho, Fushimi-ku
 Kyoto 612-8307 Japan
 TEL: +81-75-621-2360 FAX: +81-75-602-2660
 E-mail: info@shinwa-cpc.co.jp
 Website: <https://shinwa-cpc.co.jp/en/>

■ Features ■

- Employs BSA, which is a bovine serum albumin as the stationary phase.
- Effective for the enantiomer separation of acidic compounds such as allylpropionic acid drugs.
- No sample preparation is required for chiral separation.
- Can be used for reversed-phase analyses.
- Suitable for trace analyses.
- Corresponded to L75

■ ULTRON ES-BSA-2 line-up ■

P/N	Product name	Particle size (μm)	Column dimensions Length x I.D. (mm)	USP List
LCC-09571-288	ULTRON ES-BSA-2	7	150 × 4.0	L75
LCC-09571-177			150 × 4.6	
LCC-09671-281	ULTRON ES-BSA-2.G		10 × 4.0	
LCC-09771-281	ULTRON ES-BSA-2.G with Coupler		10 × 4.0	



※ Please do not hesitate to contact us for the other dimensions.

Please feel free to contact us with questions related to analyses.
Column screening services are also available.

Please be aware that specifications and prices are subject to change without prior notification.