

# SHINWA EXPRESS

*Application*

VOL. A30

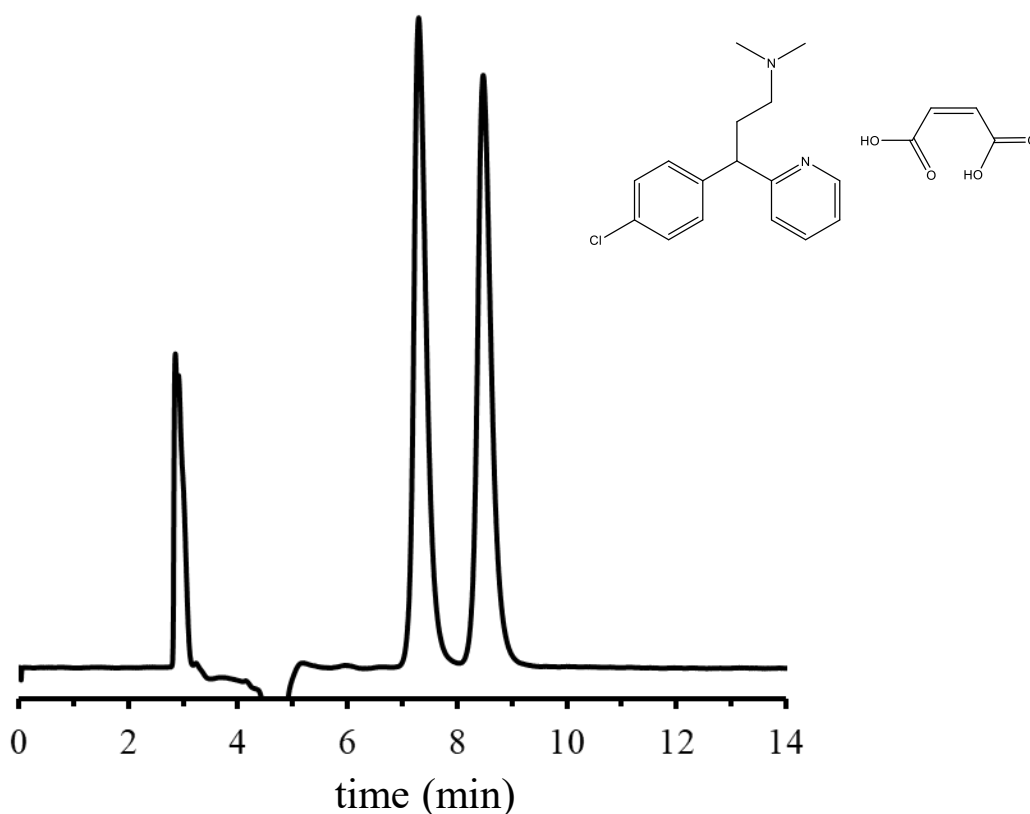
## ULTRON ES-Amy-DM

**NEW**

ULTRON ES-Amy-DM is a normal-phase column with separation capability for various isomers. An effective chiral selector with excellent molecular recognition, amylose tris (3,5-dimethylphenyl carbamate) is coated onto spherical silica gel. Separation of optical isomers, cis-trans isomers, and positional isomers are possible.

### ● Features of the ULTRON ES-Amy-DM

1. The columns are designed for the separation of various isomers
2. The columns are suitable as a first choice for studies on the separation of chiral compounds
3. Corresponded to L51



Column: ULTRON ES-Amy-DM (5  $\mu$ m)  
Column size: 250 mmL x 4.6 mm I.D.  
Mobile phase: n-Hexane/IPA/TFA = 95/5/0.1  
Flow rate: 1.0 mL/min  
Column temp.: 25°C

Detection: UV-225 nm  
Sample: Chlorpheniramine maleate (1000 mg/L)  
Diluent: 2-propanol + 0.2% diethanolamine  
Injection vol.: 10  $\mu$ L

**SHINWA CHEMICAL INDUSTRIES LTD.**

50-2 Kagekatsu-cho, Fushimi-ku  
Kyoto 612-8307 Japan  
TEL: +81-75-621-2360 FAX: +81-75-602-2660  
E-mail: [info@shinwa-cpc.co.jp](mailto:info@shinwa-cpc.co.jp)  
Website: <https://shinwa-cpc.co.jp/en/>

## ■ Analytical column specifications ■

ULTRON ES-Amy-DM / ES-Cel-DM / ES-AmyCL-DM / ES-CelCL-DM

Product name	Particle size ( $\mu\text{m}$ )	Column dimensions Length x I.D. (mm)
ULTRON ES-Amy-DM	5	150×4.6
		250×4.6
	10	250×4.6
ULTRON ES-Cel-DM	5	150×4.6
		250×4.6
	10	250×4.6
ULTRON ES-AmyCL-DM	5	150×4.6
		250×4.6
	10	250×4.6
ULTRON ES-CelCL-DM	5	150×4.6
		250×4.6
	10	250×4.6

※ Please do not hesitate to contact us for the other dimensions.  
Please feel free to contact us with questions related to analyses.  
Column screening services are also available.

Please be aware that specifications and prices are subject to change without prior notification.